

This Data Sheet Includes Information On

Marvel

• Product Model Number (s): •

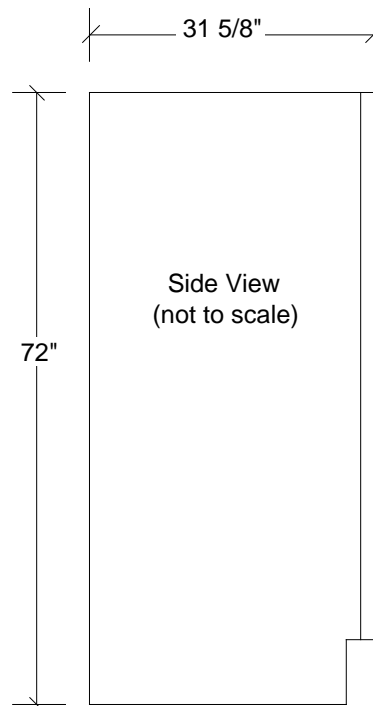
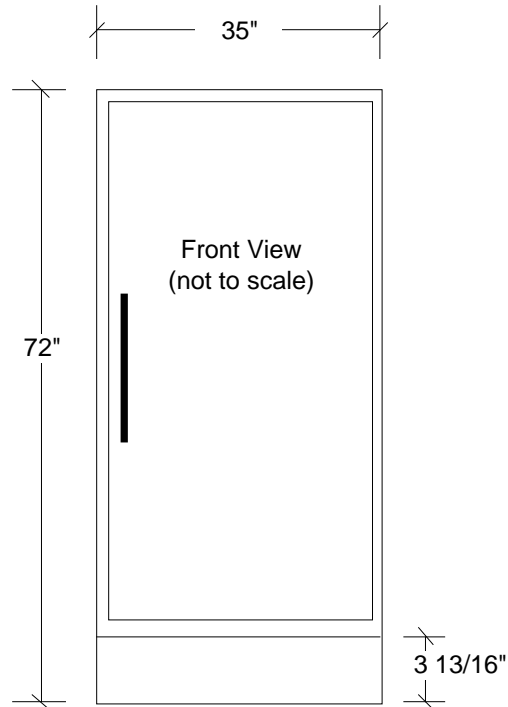
Freezers:
29AFFF and 29AF

• Dimensions (Actual Size) •

- Overall depth: 31 5/8"
- Depth without door: 28 1/2"
- Height at full leg adjustment: 73 1/4"
- Height at 0" leg adjustment: 72 3/8"
- Height without legs installed: 72"
- Width: 35"
- Toe Kick height: 3 13/16"
- Door swing at 90° (from back of unit): 64 3/16"

• Additional Information •

- Electrical requirements: 120 volts, 9.0 amps, 20 amp delay circuit required. It is recommended that the plug NOT be directly behind the unit.
- Air gap requirements: 3" clearance on sides and back. 4" clearance on top. The unit is NOT designed to be built-in.
- Does NOT accept custom panel.
- Door is NOT reversible.
- Available in White.
- 29AFFF Shipping weight: 353 pounds.
- 29AF Shipping weight: 318 pounds.
- U.L. Listed.



Subject to change without notice. This system is designed to be updated daily if necessary. Dimension Express is not responsible for use of superseded, voided, or outdated data sheets. Because of the difficulty or impracticability of determining actual damages, liability of Dimension Express shall not exceed \$50.00.

Copyright © Dimension Express, 2004.

318

• NEVER reuse Data Sheets. Data Sheets are subject to change without notice. Dimension Express is a FREE service bureau and is updated daily, it makes far more sense to spend the time necessary to request new Data Sheets for each project, as opposed to the problems, time, costs, and risks associated with reusing old Data Sheets.

- Call Dimension Express if you have any questions at (775) 833-3633 •
- Always refer to a current Code at a Glance or manufacturer directory •
- Data Sheet codes change on the first of odd numbered months at 12:01am •

BN4 • A318 • 31004 • 041504 • 164146 • 15364