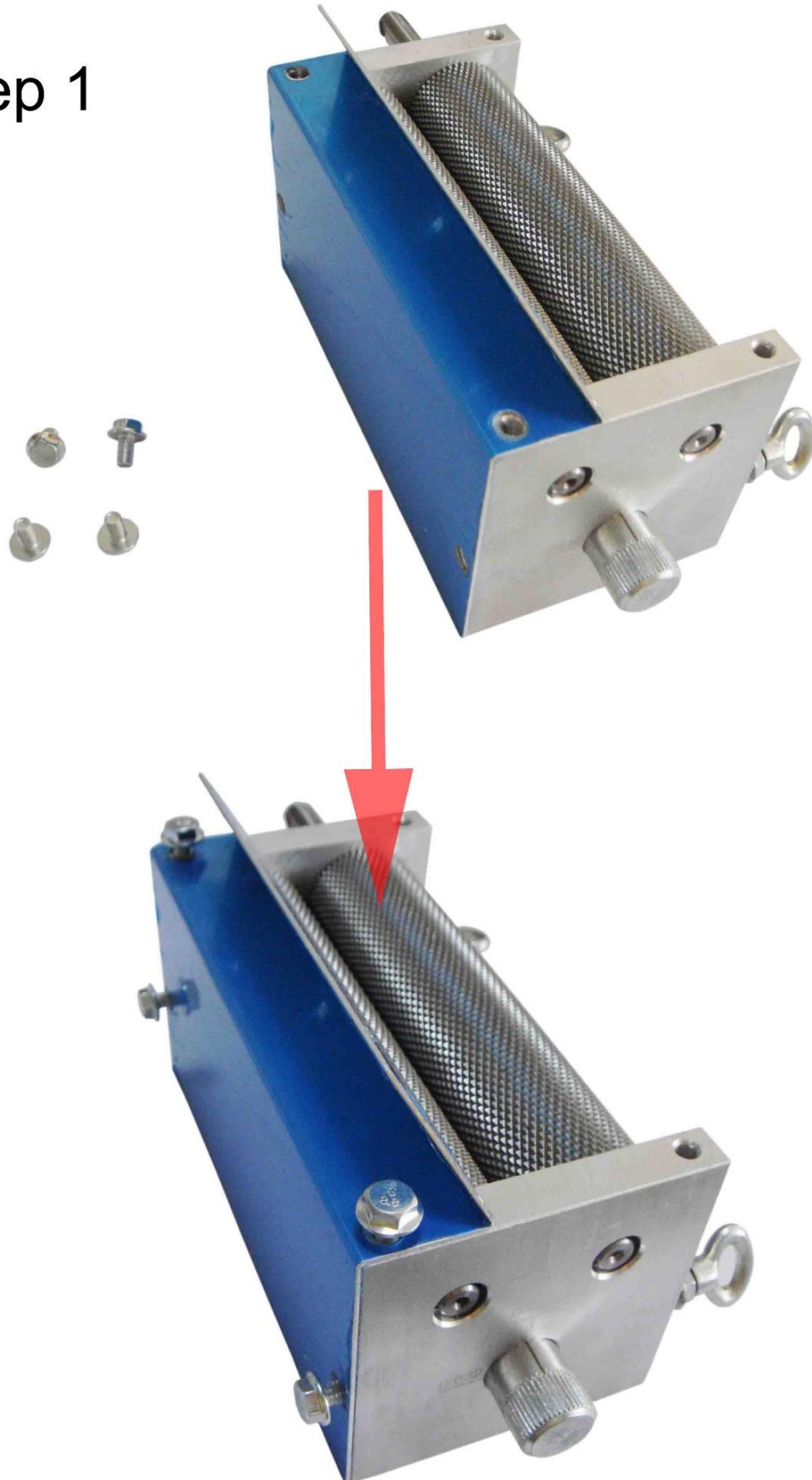


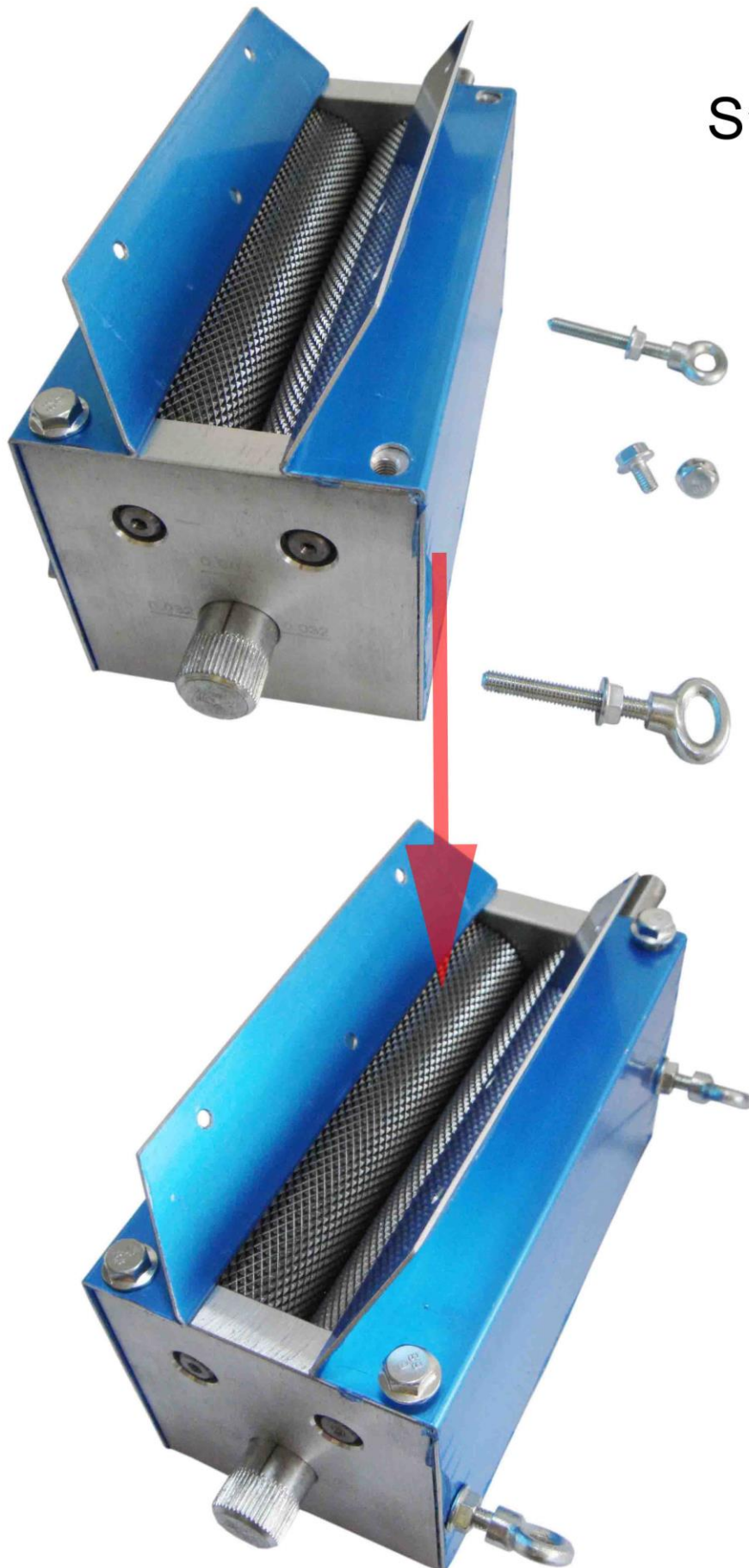
## Instructions for KM11GM-3R Grain Mill Assembly

### Step 1



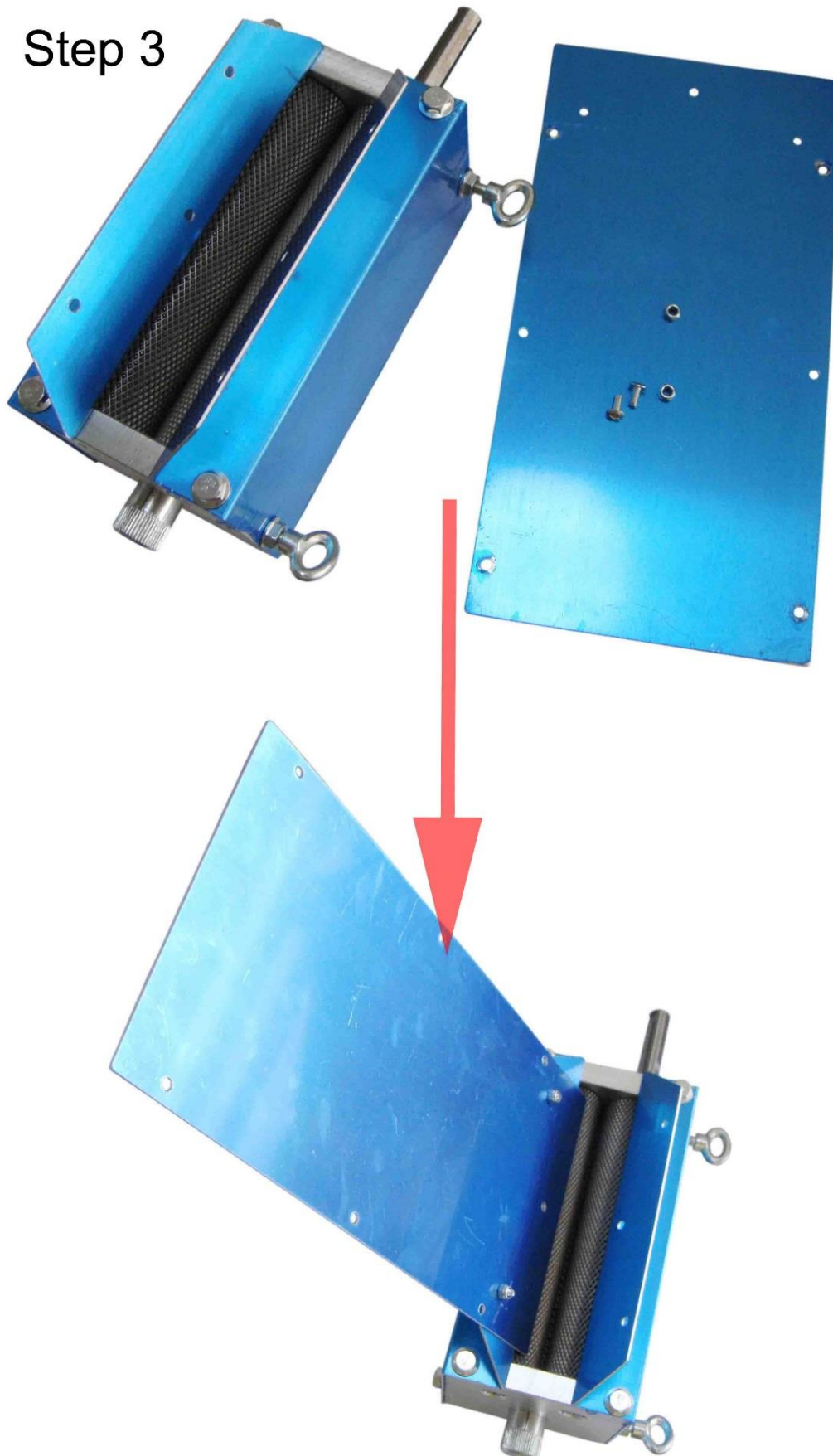
Use four of the large screws to attach the Hopper Base Panel to the Rollers Body.

## Step 2



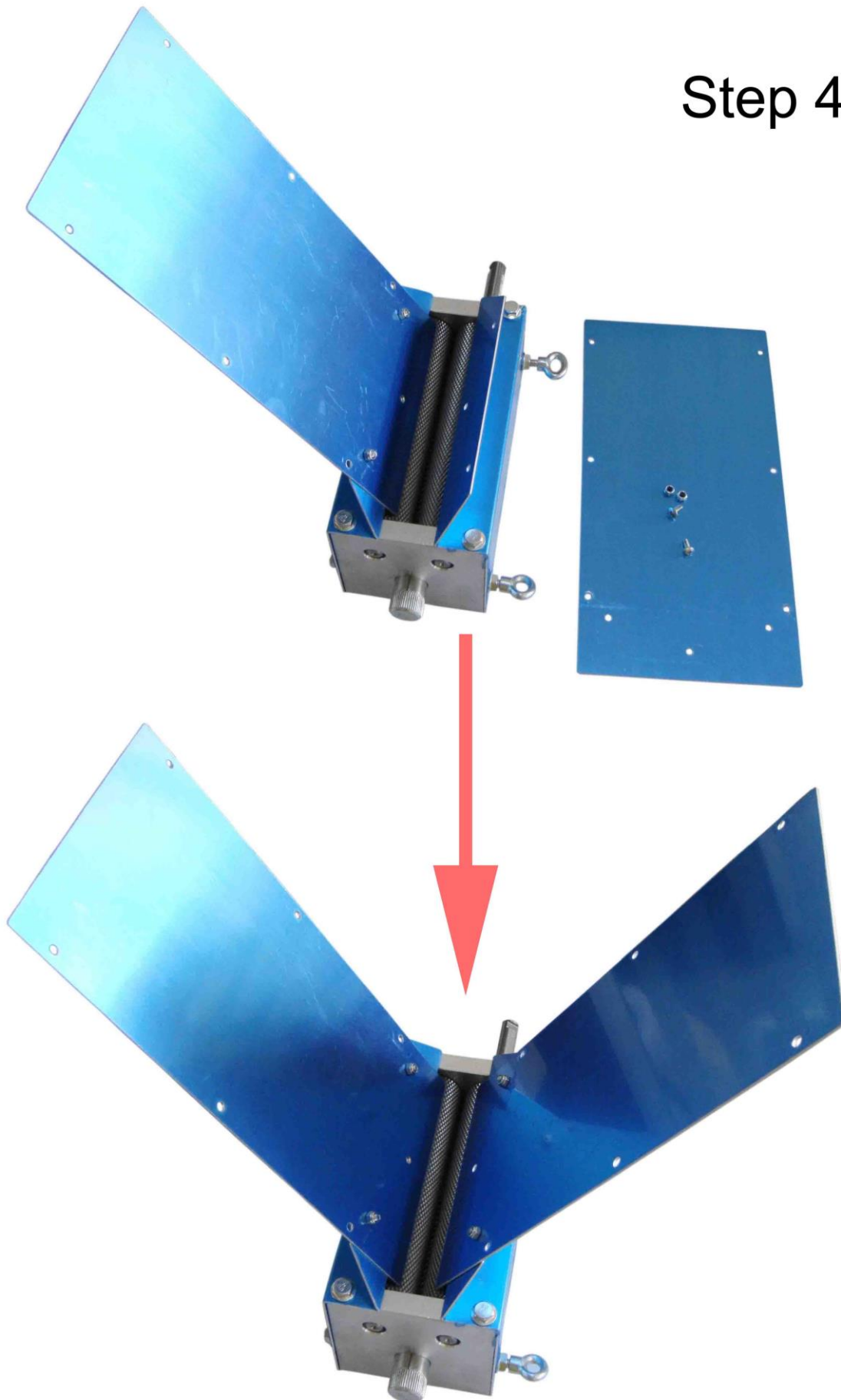
Unscrew the nuts on the Rollers Body, mount the other side of the Hopper Base Panel and re-attach the screws.

### Step 3



Attach the Hopper Back Panel to the Hopper Base Panel with the smaller screws and lock nuts provided. You will need a small screwdriver and pliers to hold the lock nut as you turn the screws.

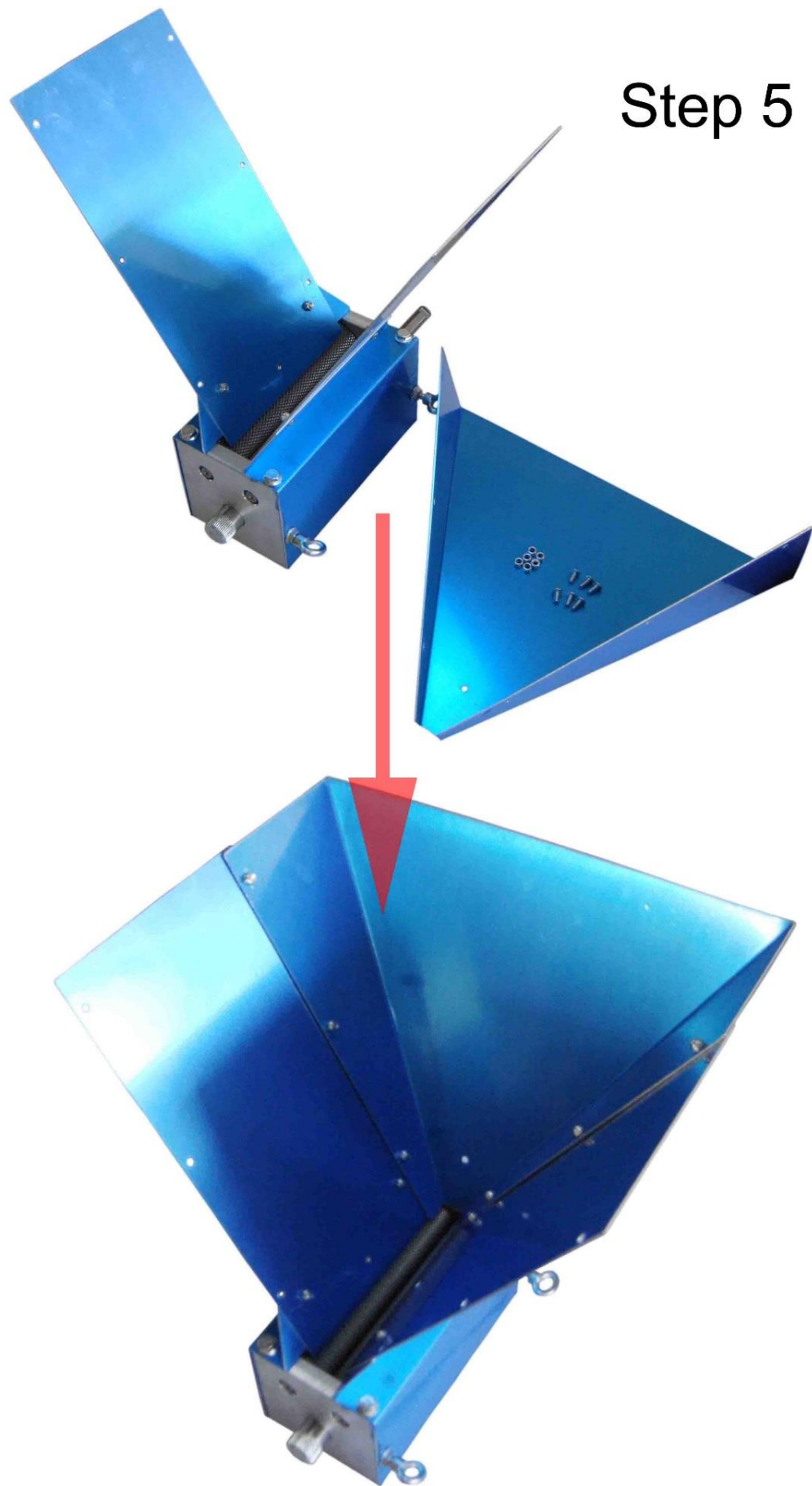
## Step 4



Attach the Hopper Front Panel on the opposite Hopper Base Panel.

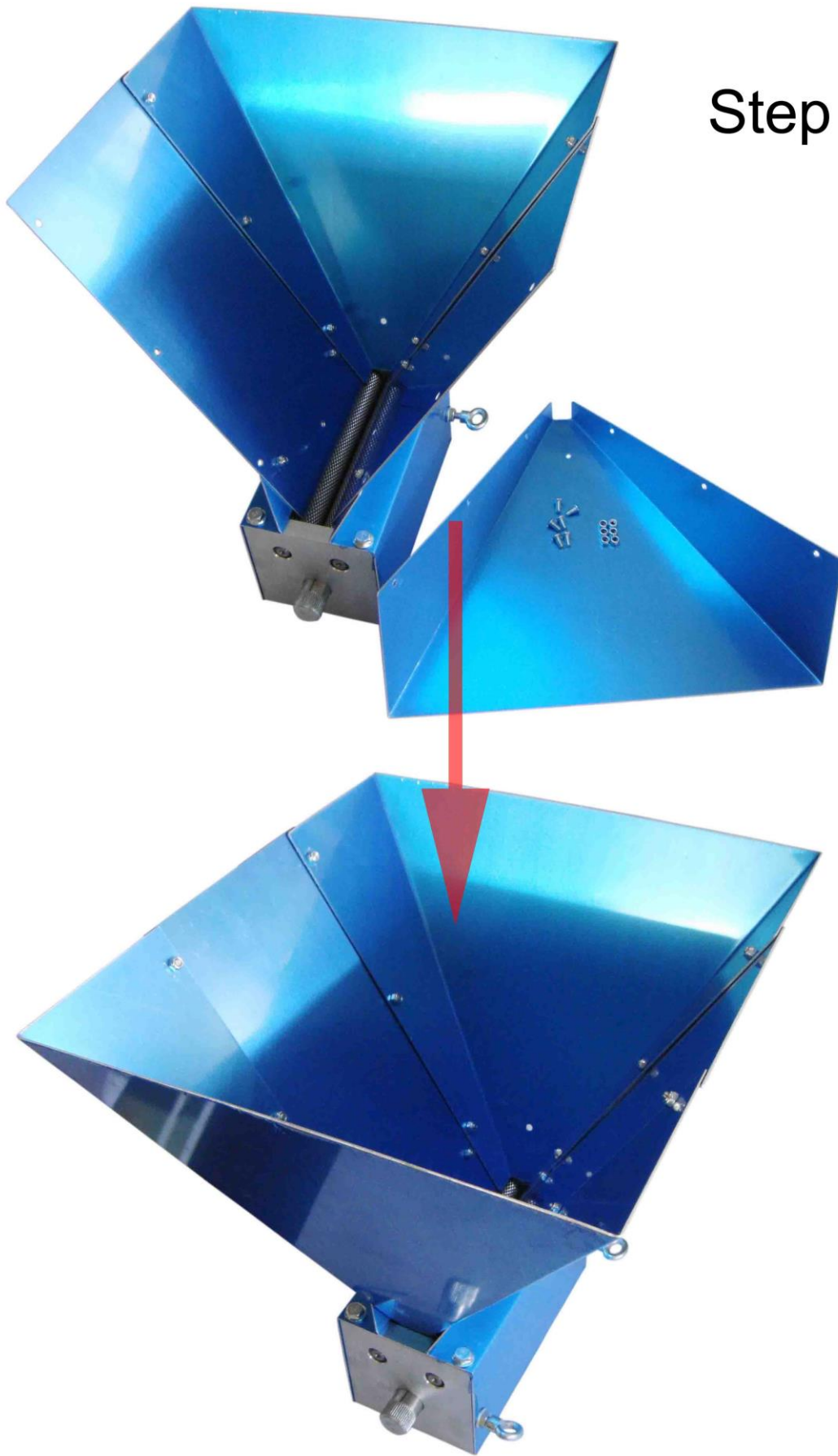


## Step 5



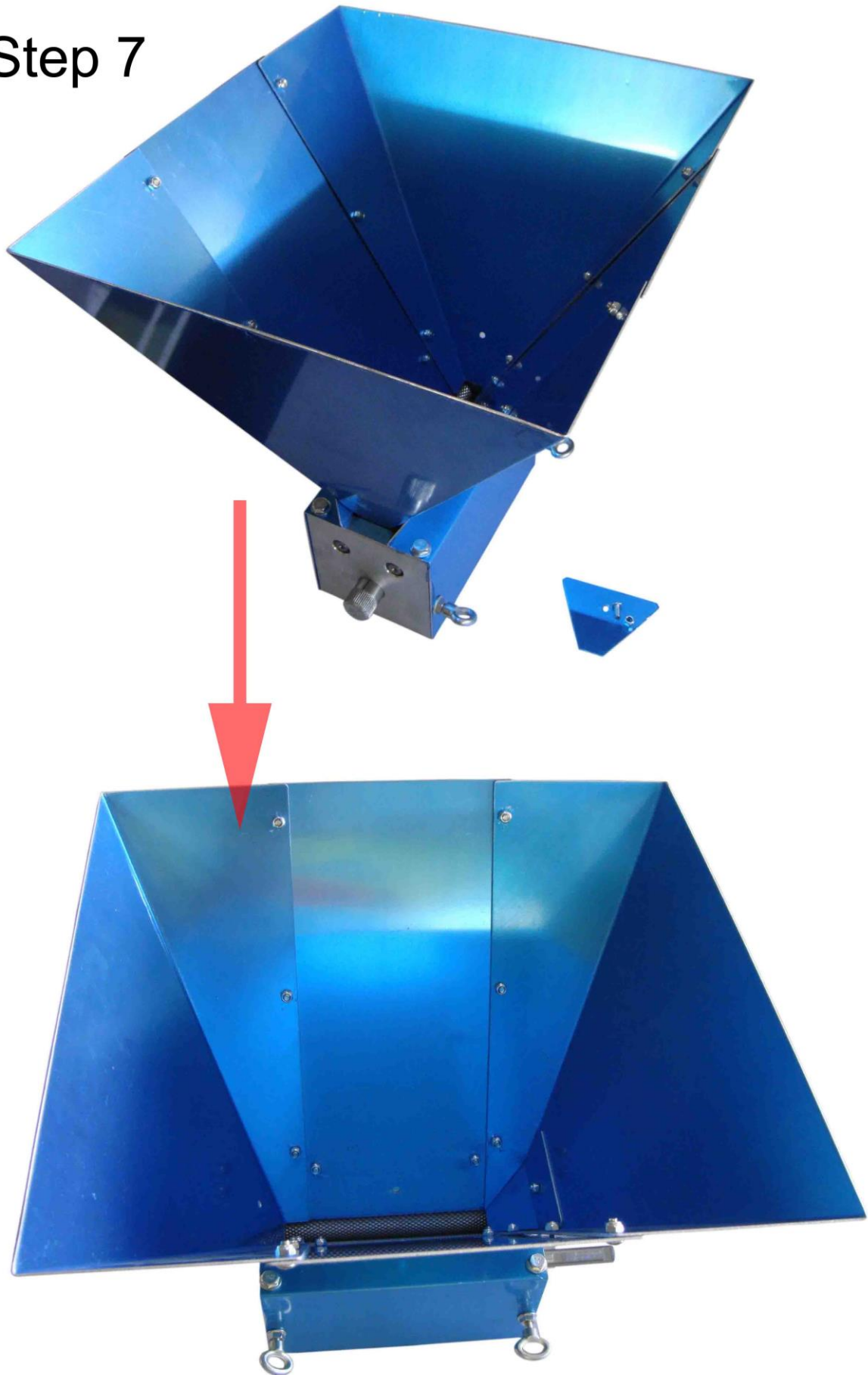
Attach the Hopper Side Panel over the top of the Hopper Front and Back Panels.

## Step 6



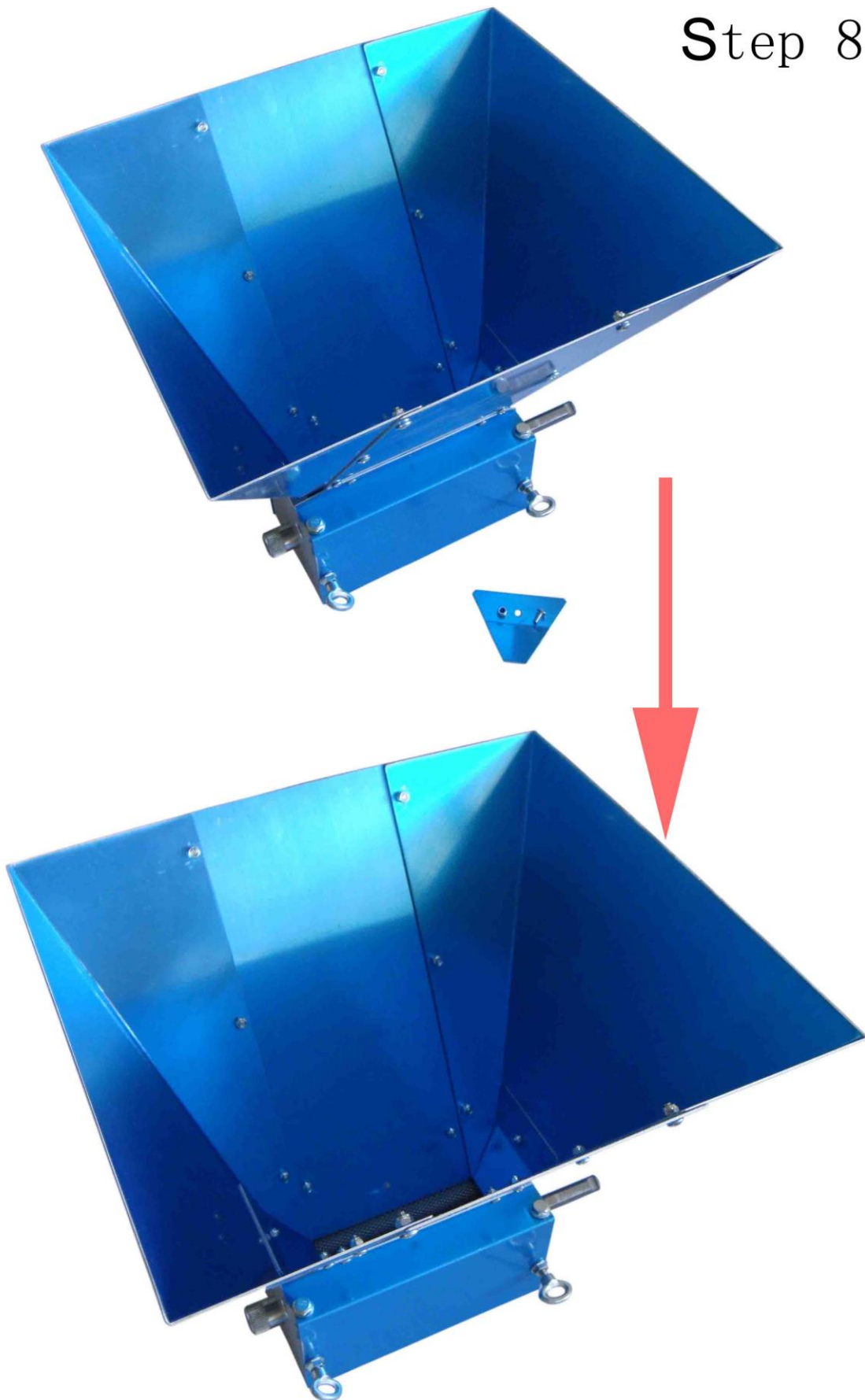
Attach the opposite Hopper Side Panel over the top of the Hopper Front and Back Panels.

## Step 7



Attach the Hopper Guide Panels to the Hopper Side Panels to ensure grains are properly directed into the mill.

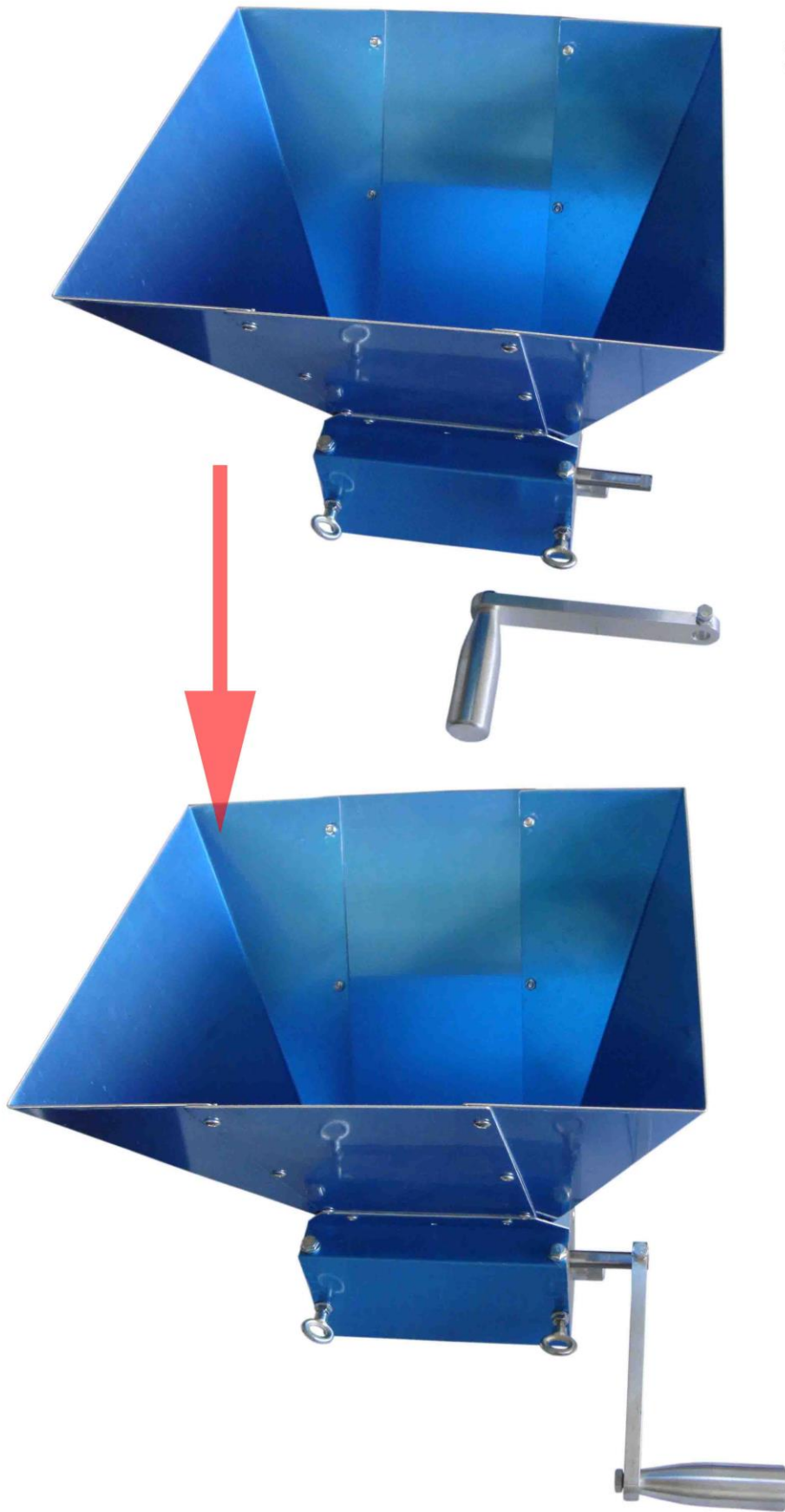
## Step 8



Attach the Hopper Guide Panels to the Hopper Side Panels to ensure grains are properly directed into the mill.

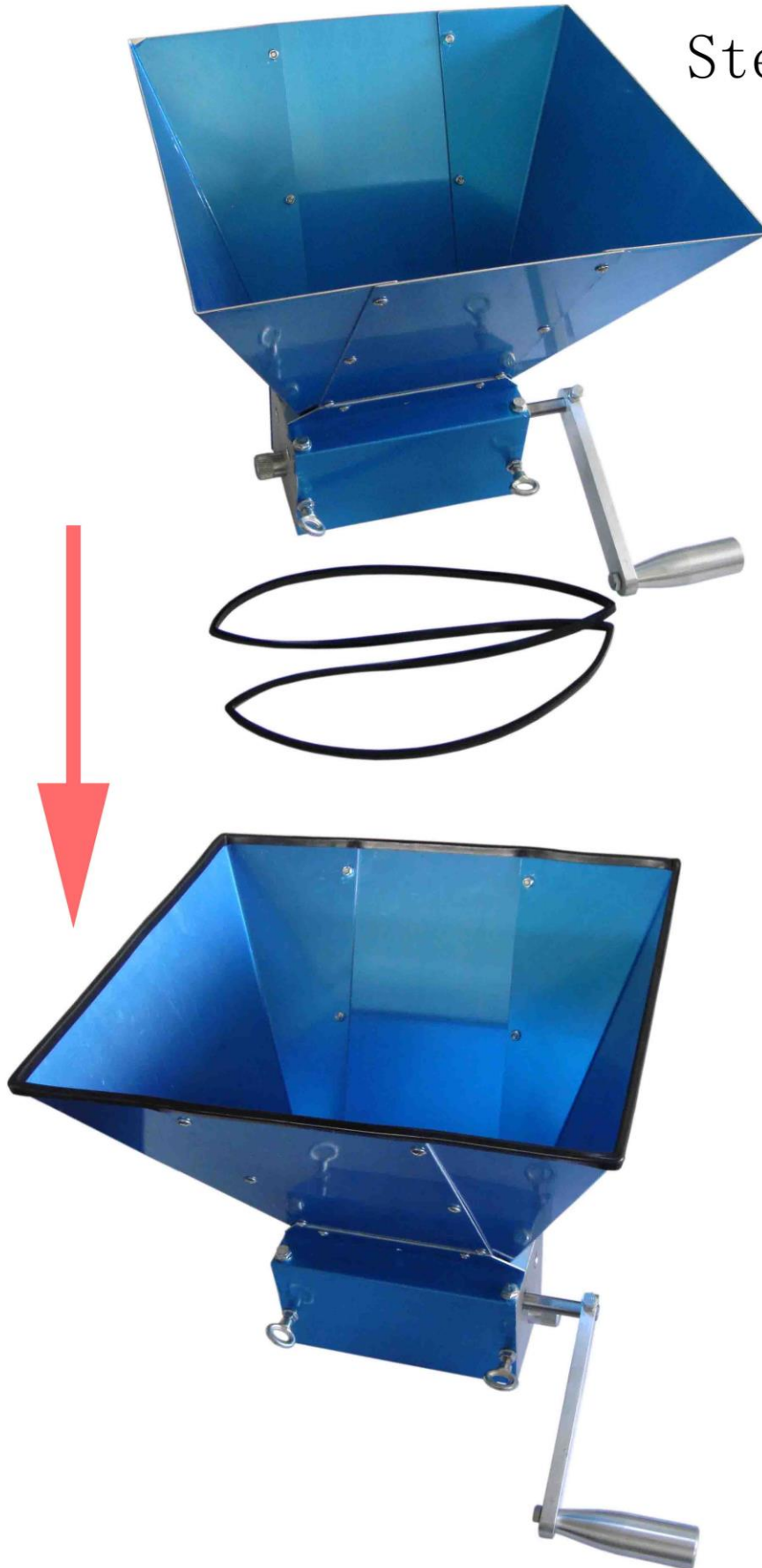


## Step 9



Attach the Handle to the crankshaft on the Rollers Body, ensuring that the screw tightens onto the flat portion of the crankshaft.

## Step 10



Attach the Hopper Gasket around the upper edge of the Hopper Panels.