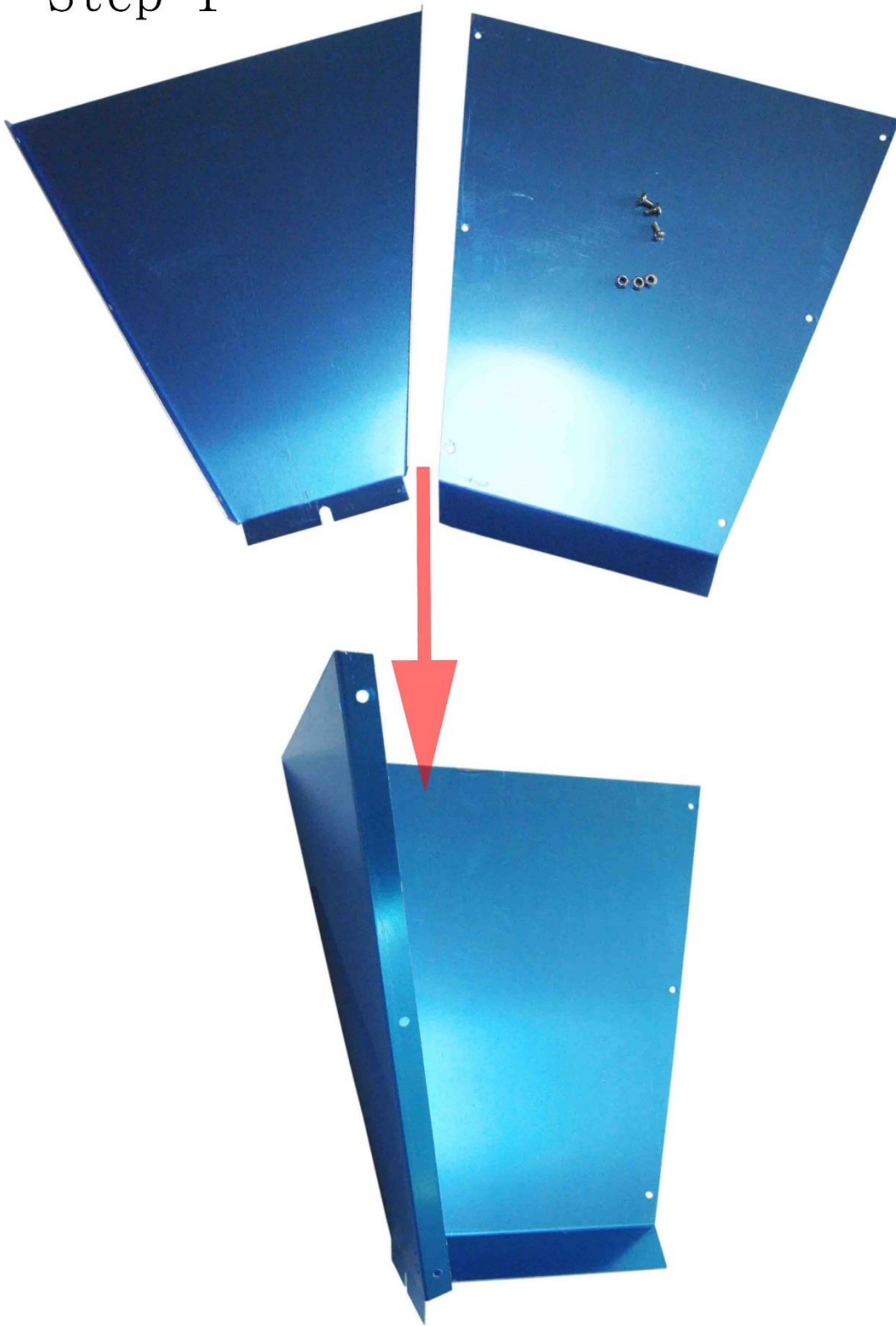


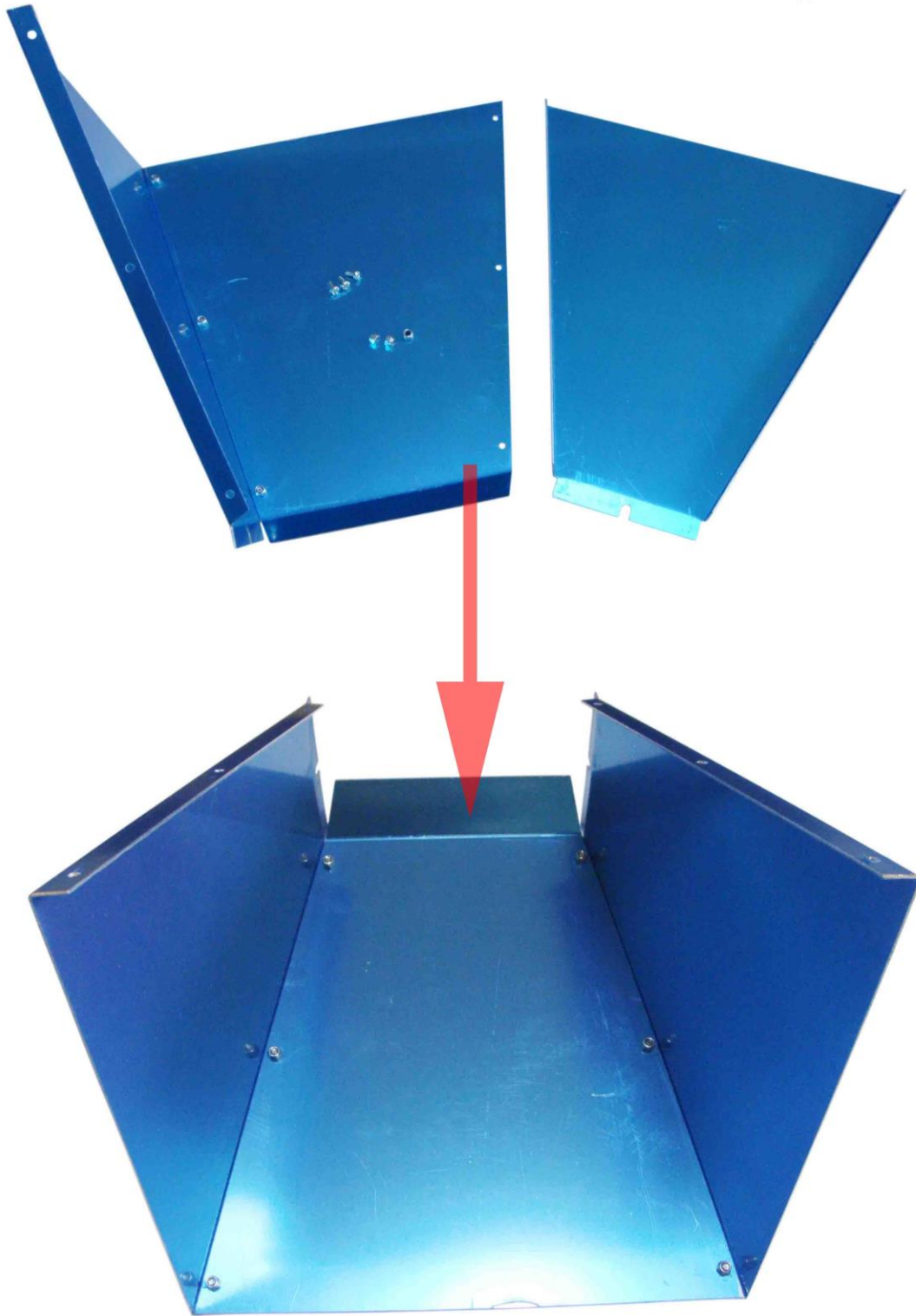
Instructions for KM7GM-2R Grain Mill Assembly

Step 1



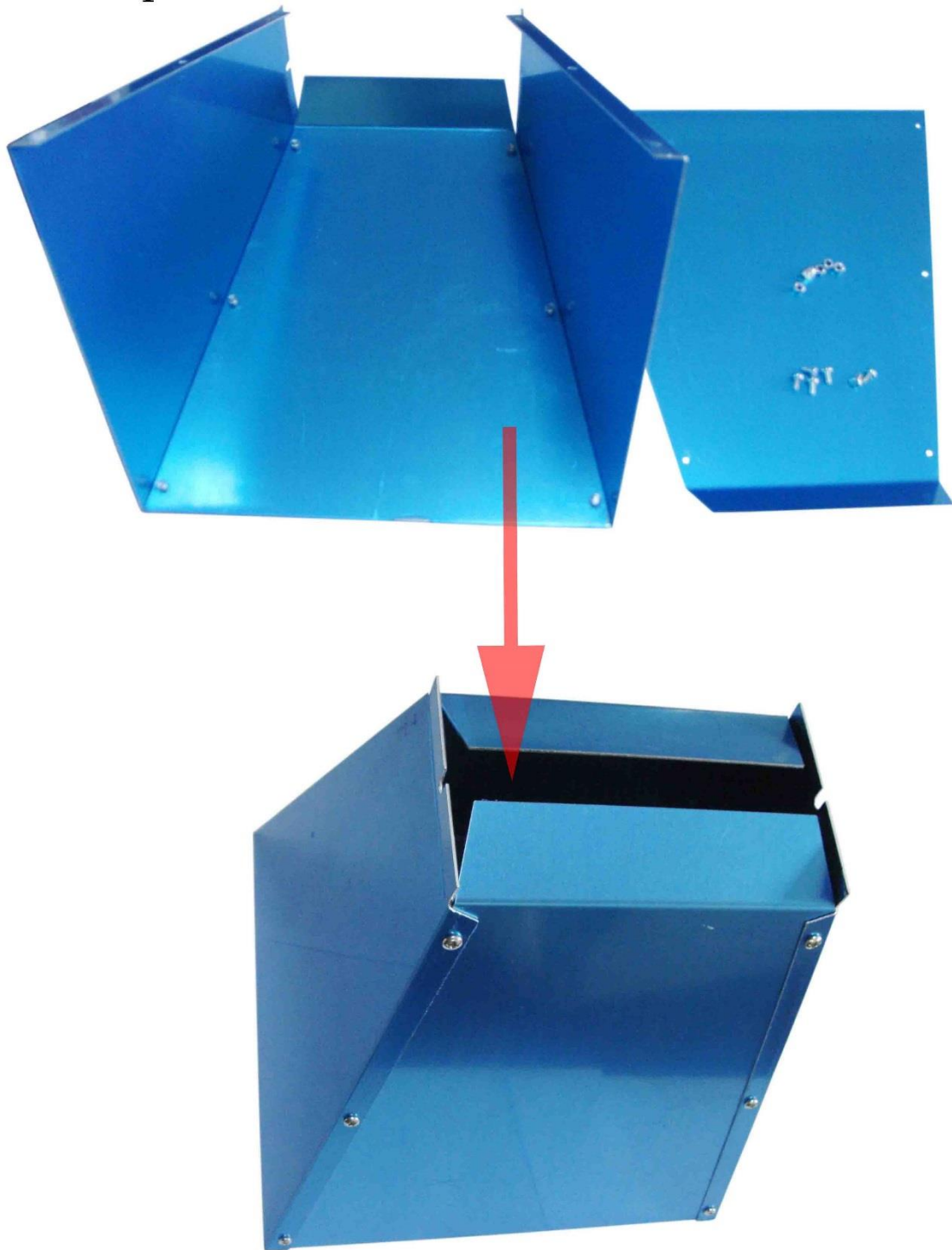
Use the provided screws and nuts to attach the Hopper Side Panel to the Hopper Front Panel.

Step 2



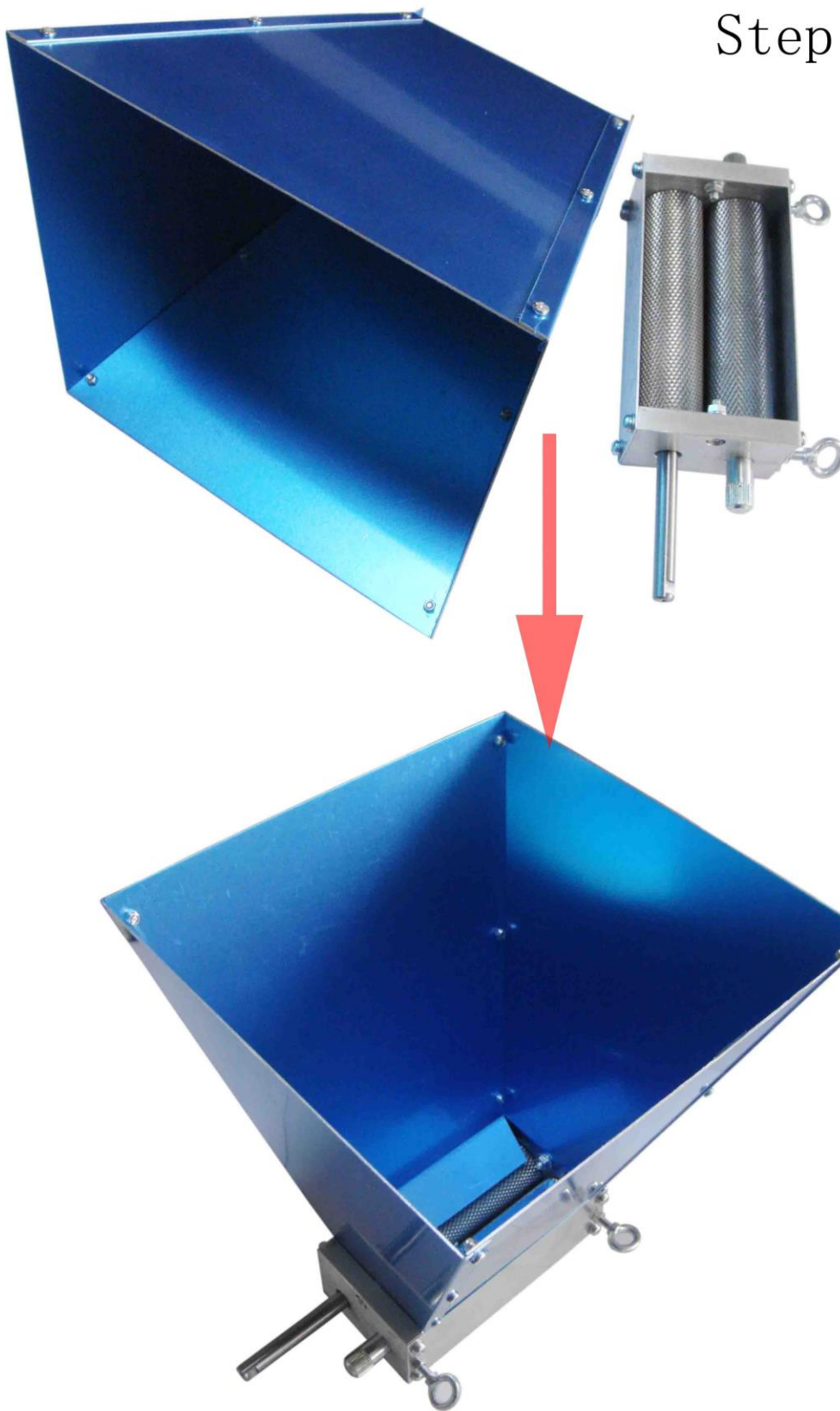
Attach the opposite Side Panel. The angles on the Side Panels should be behind the Front Panel, as shown.

Step 3



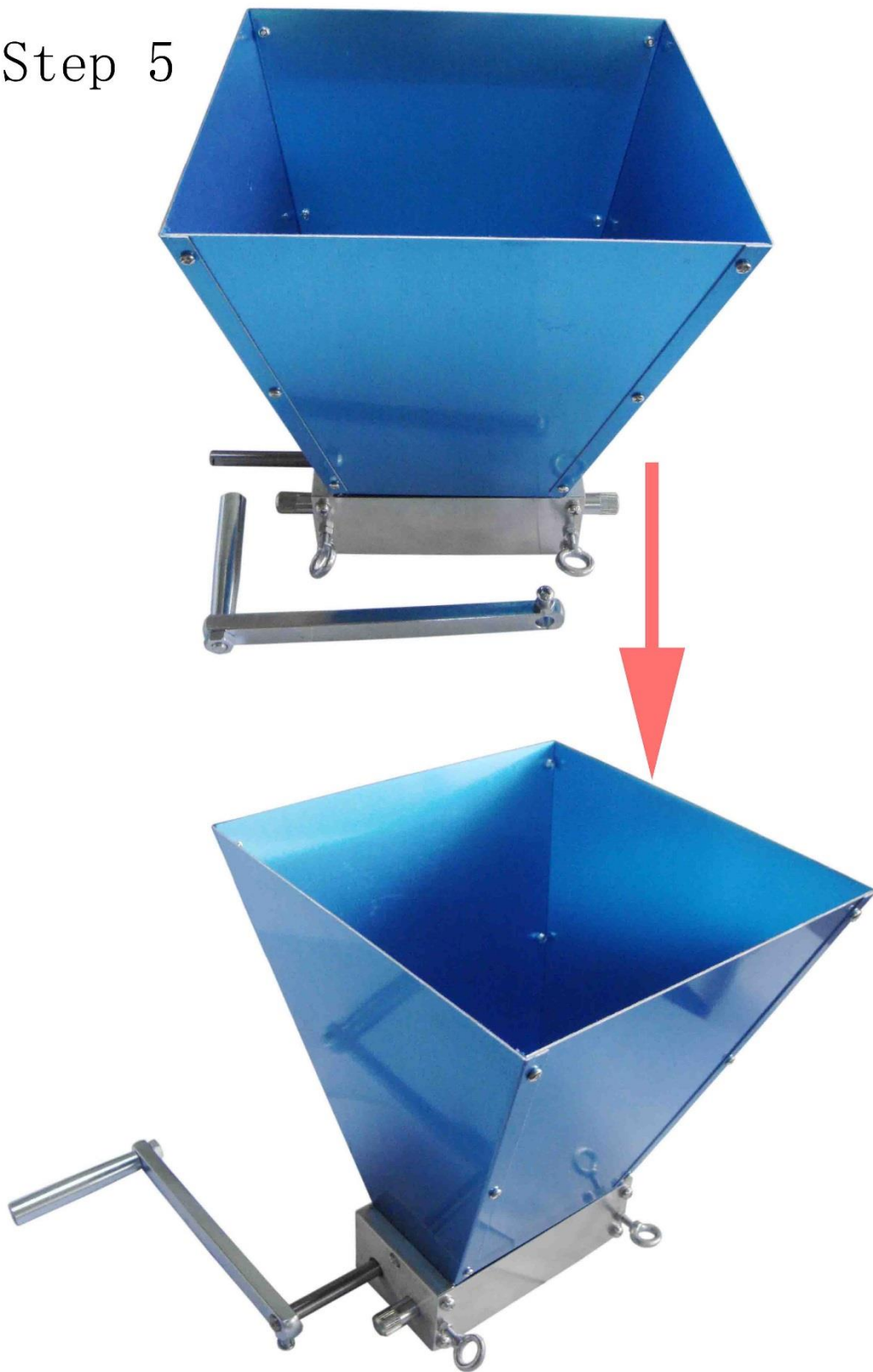
Attach the Back Panel to complete the Hopper.

Step 4



Loosen the nuts on the Rollers Body to attach the Hopper to the Rollers Body. The cut outs on the bottom tabs of the Side Panels should fit over the exposed screws. Tighten the nuts back down to fasten the Hopper in place. You may need to bend the tabs slightly to make them fit inside the Rollers Body as shown.

Step 5



Loosen the nut on the Handle and position the Handle on the crankshaft of the Rollers Body so that the nut will align with the flat part of the crankshaft. Tighten the nut onto the crankshaft.

Step 6



Install the Hopper Gasket around the upper edge of the Hopper Panels.