



SBC678OSTWIN



34.5" x 23.63" x 25.75" (H x W x D)

Outdoor frost-free beer dispenser for built-in use, with stainless steel exterior, digital thermostat, and complete tap kit

Highlights:

- Weatherproof design ensures safe operation in the outdoors
- Frost-free operation ensures minimum user maintenance
- Flexible design allows built-in or freestanding use in 24" spaces
- Twin taps let you serve two different types of beer from two 1/6 sized (sixtel) kegs

Product Features:

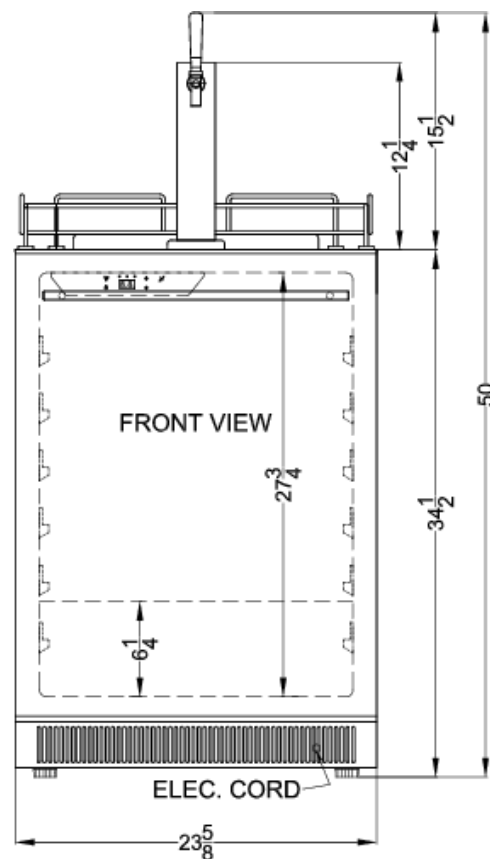
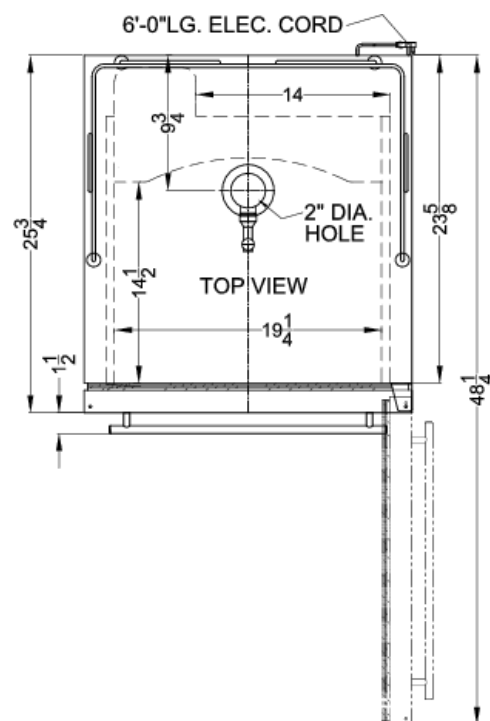
Weatherproof design	Solid construction allows placement in the outdoors
Built-in capable	Front-breathing design allows fully recessed installation under counters
Dual tap system	Twin taps let you serve two different types of beer from two 1/6 sized (sixtel) kegs
Frost-free operation	No-frost operation for minimum user maintenance
Stainless steel door	Fully wrapped 304 grade stainless steel door offers lasting durability and style
Professional horizontal handle	Sleek stainless steel handle is mounted horizontally for a modern look
Reversible door	User reversible door swing for added placement flexibility
Digital thermostat	Electronic controls ensure easy temperature management for optimum beer storage
Complete tap kit	Includes a 5 lb. CO2 tank and regulator, draft arm, dual Sankey American tap, connection hardware, and cleaning kit



SBC678OSTWIN Specifications:

Overview	
Height	34.5"
Width	23.63"
Depth	25.75"
Depth with Handle	27.25"
Depth with door at 90°	48.5"
Capacity	6.5 cu.ft.
Defrost Type	Frost-Free
Door	Stainless Steel
Cabinet	Stainless Steel
US Electrical Safety	ETL
Canadian Electrical Safety	ETL-C
Energy Usage/Year	308.0kWh/year
Amps	1.1
Voltage/Frequency	115 V AC/60 Hz
Weight	110.0 lbs.
Shipping Weight	130.0 lbs.
Parts & Labor Warranty	1 Year
Compressor Warranty	5 Years
Beer Dispenser	
Door Swing	RHD
Reversible	Yes
Tap Kit	Yes
Height with Tap	50.0"
Number of Taps	2
Adjustable Shelves	Yes
Shelf Type	Glass
Shelf Qty	2
Thermostat Type	Digital
Interior Light	Yes
Fan Type	Interior and Exterior
Refrigerant	R600a
Refrigerant Amount	1.2 oz.
High Side PSI	277.0
Low Side PSI	103.0
Inter Height	27.75"
Interior Width	19.25"
Interior Depth	24.25"

Compressor Step Height	6.25"
Compressor Step Width	19.25"
Compressor Step Depth	9.75"
Wheel Qty	4
Surface	Stainless Steel
Temperature Range	32° to 50°F



SUMMIT APPLIANCE DIVISION FELIX STORCH, INC.

770 Garrison Avenue, Bronx, NY 10474 USA TEL 718-893-3900 FAX 844-478-8799

info@summitappliance.com



www.summitappliance.com