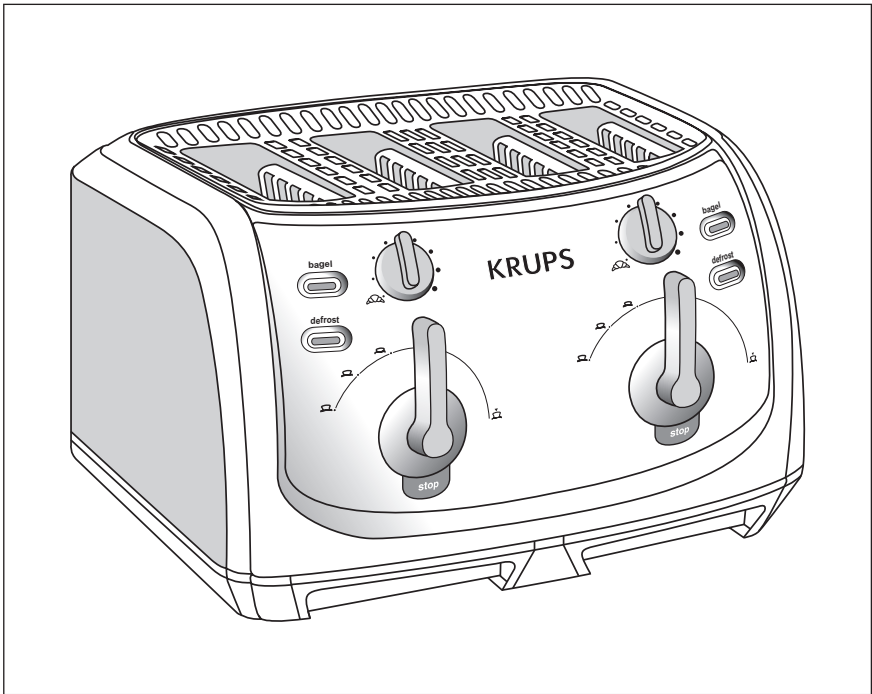
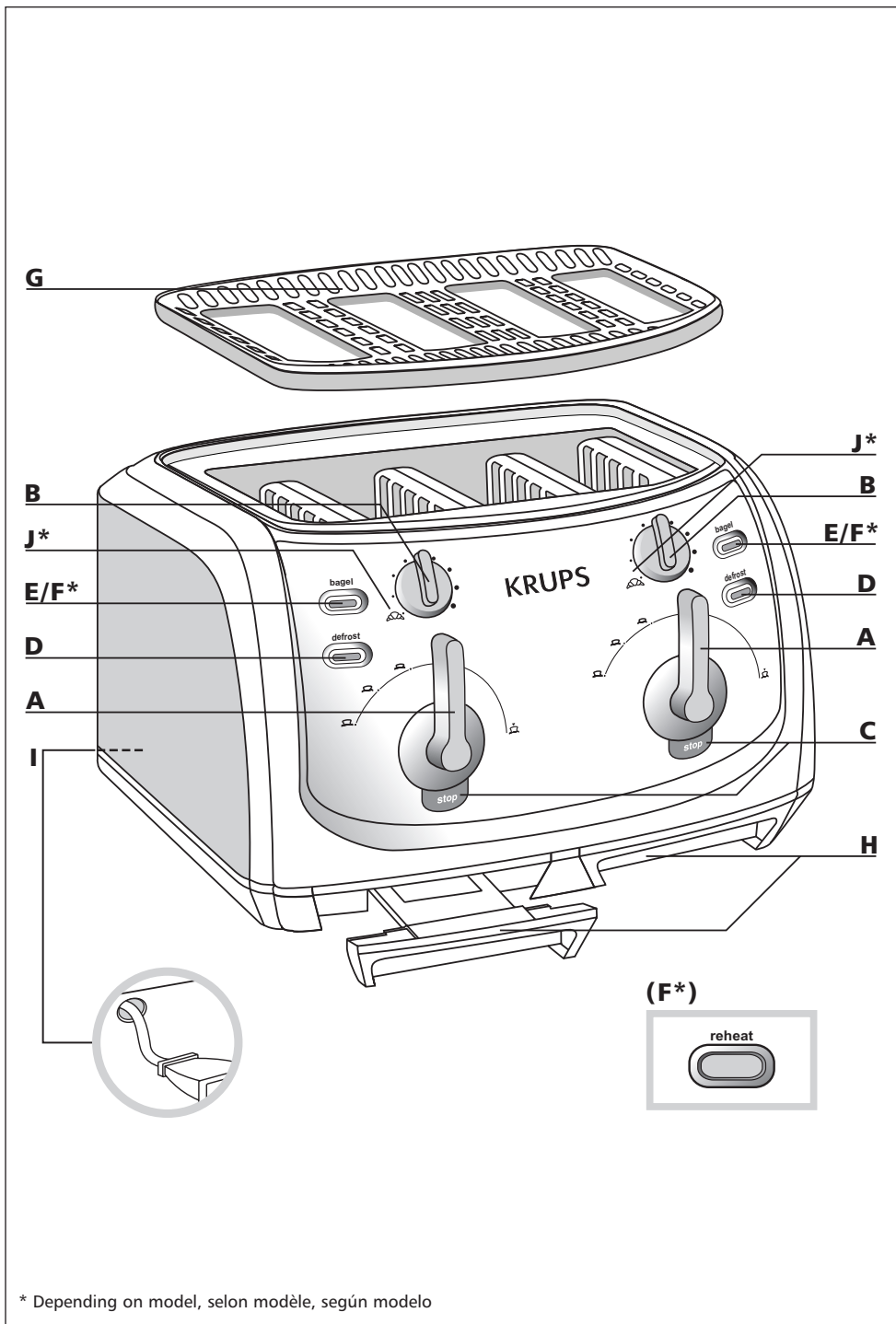


# KRUPS

FEPB  
FEMB



User Instructions



## SAFETY INSTRUCTIONS

- For your safety, this appliance complies with applicable technical rules and norms.
- Check that the main voltage corresponds to the voltage indicated on the appliance (alternating voltage only).
- Because of the diversity of applicable norms, if this appliance is used in a country other than the country it was bought in, have it checked by an authorized Service Dealer. (see list attached).
- Use a stable work surface, away from any contact with water and never in a built-in kitchen alcove.
- Do not move the appliance when working.
- Do not disconnect the appliance by pulling on the cord.

## SHORT CORD

- (a) • A short power cord is provided, to reduce risks resulting from becoming entangled in or tripping over a longer cord.
- (b) • Extension cords are available and may be used if care is exercised in their use.
- (c) • If an extension cord is absolutely necessary :
  - The marked electrical rating of the extension cord should be at least as great as the electrical rating of the appliance.
  - The cord should be arranged so that it will not drape over the countertop or tabletop where it can be pulled on by children or tripped over unintentionally.
- (d) • Do not unplug appliance by pulling on cord. Instead grasp plug and pull to disconnect.
- (e) • Never wrap cord around toaster. Use cord storage on the underside of unit.

## IMPORTANT SAFEGUARDS

**When using electrical appliances, basic safety precautions should always be followed :**

### **DO**

- Read all instructions.
- The toaster must always be used in the upright position (not on its side or tilted forward or back).
- Before each use, make sure that the crumb tray is in its proper location.
- Regularly remove crumbs from crumb tray.
- The control lever must be in the "Up" position before attaching or disconnecting the plug from wall outlet.
- Unplug from outlet when not in use and before cleaning. Allow to cool down before cleaning and before putting on or taking off parts.
- This appliance is equipped with a polarized plug (one blade is wider than the other). To reduce the risk of electric shock, this plug is intended to fit into a polarized outlet only one way. If the plug does not fit fully into the outlet, reverse the plug. If it still does not fit, contact a qualified electrician.  
Do not attempt to modify the plug in any way.
- If bread jams in the slots after toasting the unit will automatically shut off. Disconnect the plug immediately from the wall outlet and wait for the appliance to cool before attempting to remove the bread..
- Disconnect the appliance if it shows any working abnormalities.

## DO NOT

- Do not leave the appliance within the reach of children.
- The appliance is not intended for use by young children or inapt persons without close supervision.
- Young children should be supervised to ensure they do not play with the appliance.
- Never leave the toaster unattended during operation, particularly when toasting for the first time or when changing settings.
- Do not use appliance for other than its intended use.
- Do not touch the metal parts or hot surfaces of the appliance when it is working. Use handles or knobs.
- Oversized foods, metal foil packages, or utensils must not be inserted in a toaster as they may cause an electric shock or fire.
- The use of accessory attachments are not recommended by the appliance manufacturer as it may cause injuries.
- To protect against electrical shock do not immerse cord, plugs, or appliance in water or other liquids.
- Do not try to toast bread that may melt (with icing) or drip in the toaster and do not toast crusts as this may damage the appliance or cause a fire.
- Do not try to toast very thick slices of bread that could block the toasting mechanism.
- Do not operate any appliance with :
  - a damaged cord or plug ;
  - after the appliance malfunctions, or has been damaged in any manner. Return appliance to an Authorized Krups Service Center for examination, repair, or adjustment, in order to avoid any risk of danger.
- Do not let the cord hang over the edge of countertop or come in contact with hot surfaces.
- Do not use outdoors. Avoid humid environments.
- Do not place on or near a gas or electric burner or near a heated oven.
- Bread can burn, do not cover this appliance while in use and do not use this appliance near any flammable materials such as curtains, under shelving or wall cupboards, etc. . . it should be attended when in use.
- Do not put paper towels, cardboard or plastic in, on or under the toaster.
- If flames were to arise from parts of the toaster, never attempt to extinguish them with water. Unplug the appliance and smother the flames with a damp cloth.
- Do not attempt to dislodge food when toaster is plugged in.
- Do not use this appliance as source of heating or drying.
- Do not use the toaster for cooking, grilling or defrosting frozen food other than bread products.

**This product has been designed for domestic use only. Any professional use, inappropriate use or failure to comply with the instructions will void the warranty.**

## SAVE THESE INSTRUCTIONS.

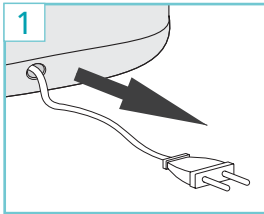
Thank you for choosing an appliance from the KRUPS range which is designed exclusively for toasting bread and warming bakery products.

## DESCRIPTION

Your toaster features totally independent sets of slots with two individual browning setting control.

- A Control lever with "HIGH-LIFT" position
- B Browning select, 8 positions
- C STOP button
- D DEFROST button\*
- E BAGEL button\*
- F REHEAT button\*
- G Integrated warming plate removable
- H Removable crumb tray
- I Cord storage
- J 2 "croissants" setting\*

## GETTING STARTED



- Unpack the toaster and remove any labels.
- Wipe the outside of the toaster with a damp cloth, dry it.
- Gently pull the electrical cord out of the base entirely before plug it in. - (fig1).

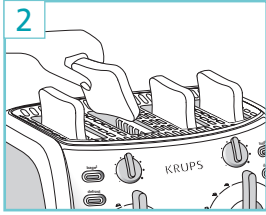
 **Never operate the appliance with the cord partially unrolled.**

- Operate the toaster empty twice at the highest toast setting to eliminate the "new smell" odor. (Ventilate the room).

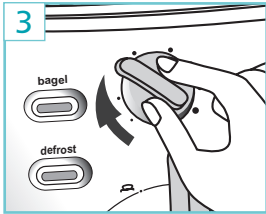
### Helpful hints

- Differences in moisture levels from one bread to another can result in varying toasting times and browning levels. Below are some general recommendations :
- Slightly dry bread should be toasted on a lower setting.
- Very fresh bread or whole wheat bread should be toasted on a slightly darker setting. Breads with uneven surfaces, such as English muffins, may require a darker setting.
- When toasting items with fruit, such as raisin bread or tea-cakes, remove any loose fruit before toasting (raisins may fall into the appliance and create a fire hazard).
- When toasting bagels, slice the bagel into two equal halves before toasting.
- If you are toasting one slice of bread, set the browning control at a lower setting.
- Use caution when warming or toasting sugar coated or filled items (such as toaster pastries). Always set the browning control to the lowest setting.

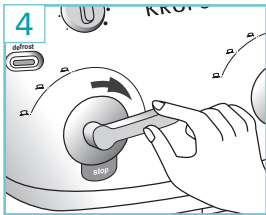
## TOASTING BREAD two independant sets of slots



- Insert the slice(s) of bread into the toasting slots - (fig 2).



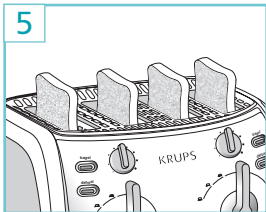
- Use the browning select to choose one of eight toasting cycle times while considering the type, freshness and the thickness of the bread - (fig3).
  - 1 very slightly browned
  - 2-3 lightly browned
  - 4-5 lightly browned
  - 6-7 well toasted
  - 8 very well toasted



- Rotate the control lever until it locks into right position - (fig4).
- The bread slices are automatically centered and the toasting begins.

**⚠ The control lever can only be locked in the lower position when the toaster is plugged in.**

**⚠ Any bread protruding out of the slots will not be toasted.**



**⚠ Never leave the toaster unattended during use. Use caution when toasting sugar coated or filled items (such as toaster pastries) Always set browning control to lowest setting.**

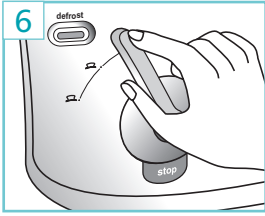
**⚠ Before toasting, be sure that toaster is not under cabinets or other flammable materials such as curtains.**




**⚠ Reducing the browning select if you are toasting only one slice.**

- The toaster automatically stops at the end of the toasting cycle, the control lever lifts up to vertical and the slices of bread pop up - (fig5).
- The toasting cycle may be interrupted at any time by pressing the « STOP » button.

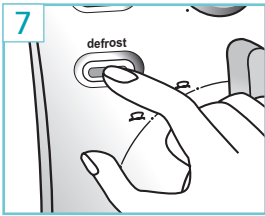
**⚠ Do not use the control lever to stop the toasting cycle.**

## HI-LIFT FUNCTION



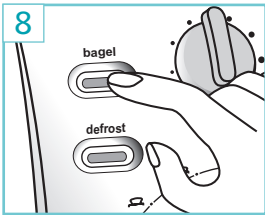
- Turn the control lever to the left and choose one of 3 hi-lift positions. The control lever will lock into each position to allow easy one handed removal of the toasted bread.
- To remove small slices of bread after the toasting cycle, 3 pop-up options are available:
  - the first position to the left  for average slices. - (fig6).
  - the 2nd position to the left  for thick slices.
  - the 3rd position to the left  for very small slices.
- turn the control lever to the vertical starting position.

## DEFROST FUNCTION\*



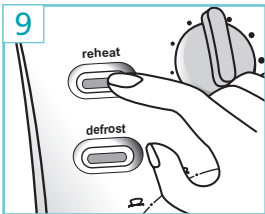
- Adjust the browning control.
- Press the « defrost » button - (fig7) and then press the control lever down. Defrosting bread will take a little longer to toast as the toaster will automatically defrost the bread first before toasting.
- At the end of the cycle the toaster stops automatically and the control lever returns to the vertical starting position.

## BAGEL FUNCTION\*



- Insert each half of the bagel or French bread in the slots with the inside soft part of each slice towards the central divider (and crust facing out).
- Select the browning level desired then press the « bagel » button - (fig8). Press the control lever down.
- The browning time will be adapted on the selected browning level.
- Once browned, the bagel will pop up automatically and the toaster will switch off.
- At the end of the cycle the toaster stops automatically and the control lever returns to the vertical starting position.

## REHEATING FUNCTION\*



- Press the « reheat » button - (fig9) and then press the control lever down.
- The toaster will come on for just a short time to heat up bread that has already been toasted.
- At the end of the cycle the toaster stops automatically and the control lever returns to the vertical starting position.

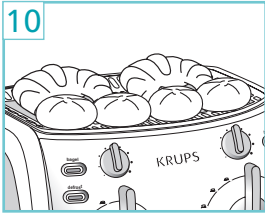
\* Depending on model

## USING THE WARMING PLATE

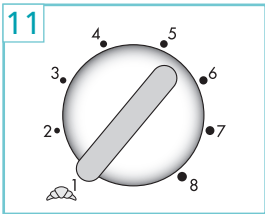
### bagels and bakery products


- Integrated warming plate used for warming croissants, muffins, dinner rotis, pita breads and other bakery products.

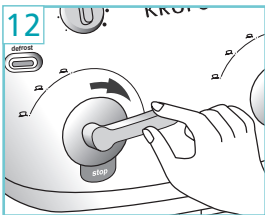
 **Do not warm sugar-coated or greasy breads on the warming plate to avoid them melting in the toaster : this may cause a fire hazard.**



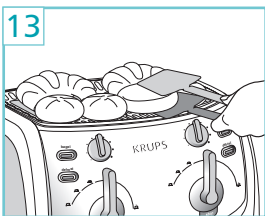
- Do not use the toaster with toast into the slots and warm up breads on warming plate at the same time.
- Place the bakery product(s) directly on the integrated warming plate - (fig10).



- Depending on the bakery products: - (fig11).
  - For fragile bakery products such as croissants, set the browning select to the "croissant" setting .
  - For buns and other rolls with a thicker crust, set the browning control dial to 3.



- Rotate the two control levers until it locks into right position - (fig12). The toast cycle begins and heat will rise to the warming plate.
- At the end of the cycle the toaster stops automatically and the control lever returns to the vertical starting position.



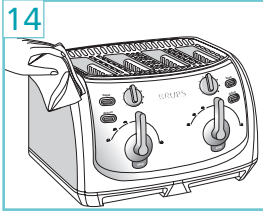
- Depending on the thickness of the bread or bakery products and particularly for rolls a second warming cycle may be necessary to warm through the middle.
- To reheat the other side, turn the bread over using oven mitts or bread tongs as the metal and bread will be hot\* - (fig13).
- Begin a second warming cycle by turning the control lever on the right and leave them to warm.

 **CAUTION : The warming plate will be hot.**

\* Bread tongs and glove not provided with the toaster.

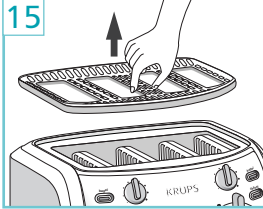
## MAINTENANCE, CLEANING, STORAGE

14



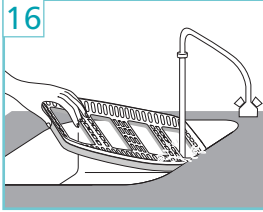
- Always unplug the toaster and let it cool before cleaning or handling.
- To wipe the outside of the toaster, the cord and the warming plate : use a soft cloth or a damp sponge and a mild dish detergent. Dry thoroughly - (fig14).

15



- The warming plate is removable : Grip the metal warming plate by the middle, gently pull until it becomes detached and clean with water and a mild dish detergent then dry thoroughly - (fig15-16).
- If necessary warming plate can be put in the dishwasher for more thorough cleaning.
- To attach the warming plate, insert the 4 tabs on the warming plate into the corresponding slots on the toaster and check that it is correctly in place before each use - (fig17).

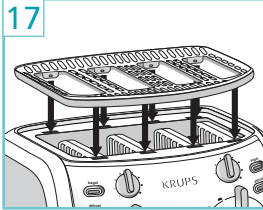
16



**⚠ Never use toaster without the warming plate in place.**

- To clean the crumb tray : pull out the tray completely and discard the crumbs - (fig18).
- Do not put the crumb tray in the dishwasher.
- Do this regularly, after each use if possible (toasting or re-heating).
- If crumbs or crusts remain inside the heating elements or in toaster, remove the warming plate then turn the toaster upside down so that these remaining crumbs fall out. Replace the crumb tray and the metal warming plate carefully.

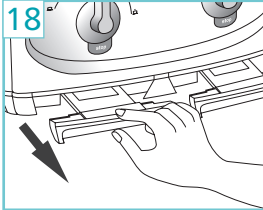
17



**⚠ Do not use any abrasive cleaning agents (no soda-based scouring products, no scouring pads...), no metallic utensils, metal scouring pads etc.**

**⚠ For appliance with a metallized finish\* : Do not use any cleaning products designed for metals. Use a soft cloth with a window or glass cleaner.**

18



- Always let your appliance cool down completely prior to storing especially in a tightly enclosed space, heat may damage any type of flammable material.
- Do not wind the cord around the body of the appliance.
- After the appliance has cooled the power cord can be fed back into the base for storage. - (fig1).

\* Depending on model

## LIMITED WARRANTY

This Krups product is warranted for 1 year from the date of purchase against defects in material and workmanship. During this period, the Krups product that, upon inspection by Krups, is proved defective, will be repaired or replaced, at Krups' option, without charge to the customer. If a replacement product is sent, it will carry the remaining warranty of the original product. This warranty does not apply to any defect arising from a buyer's or user's misuse of the product, negligence, failure to follow Krups' instructions, use on current or voltage other than that stamped on the product, wear and tear, alteration or repair not authorized by Krups, or use for commercial purposes.

THE WARRANTIES SET FORTH HEREIN ARE EXCLUSIVE AND NO OTHER WARRANTIES, EXPRESS OR IMPLIED, INCLUDING BUT NOT LIMITED TO ANY WARRANTY OF MERCHANTABILITY OR FITNESS FOR A PARTICULAR PURPOSE OR USE, ARE MADE BY KRUPS OR ARE AUTHORIZED TO BE MADE WITH RESPECT TO THE PRODUCT.

Some states do not allow limitation on how long an implied warranty lasts or do not allow the exclusion of incidental or consequential damages, so the above limitations may not apply to you. This warranty gives you specific legal rights, and you may also have other rights, which vary from state to state.

If you believe your product is defective, bring the product (or send it, postage prepaid) along with proof of purchase to the nearest authorized Krups Service Center. (Please contact your respective countries customer service department, indicated below, for the address of the nearest authorized Krups Service Center.)

If you send the product, please include a letter explaining the nature of the claimed defect.

If you have additional questions, please call our Consumer Service Department:

**USA: 1-800-526-5377;**  
**Mon – Fri 8:30 a.m. – 7:00 p.m. (EST).**  
**www.KrupsUSA.com**

**Canada: 1-800-418-3325;**  
**Mon – Fri 8:30 a.m. – 4:30 p.m. (EST)**  
**www.Krups.ca**

Please note hours are subject to change.

Before calling the Consumer Service Department, please have the type number of your KRUPS appliance available. You must have this information before calling our Consumer Service Department so that we may better answer your questions. The type number can be located by looking at the bottom of your appliance.

Any general correspondence can be addressed to:

**USA: KRUPS**  
**196 Boston Avenue Medford MA 02155**

Only letters can be accepted at this address. Shipments and packages that do not have a return authorization number will be refused.

**Canada: Groupe SEB Canada Inc.**  
**455 Finchdene Square Scarborough, Ontario M1X 1B7**

## ENVIRONMENTAL PROTECTION

The packaging of your product is made of recyclable materials. Do not throw it in your usual dustbin; take it to a nearby separated waste collection centre.

The approved after-sales service centres will accept your used appliance in order to dispose of it in an environmentally friendly manner or you can take it to a specialised collection centre provided for this purpose.