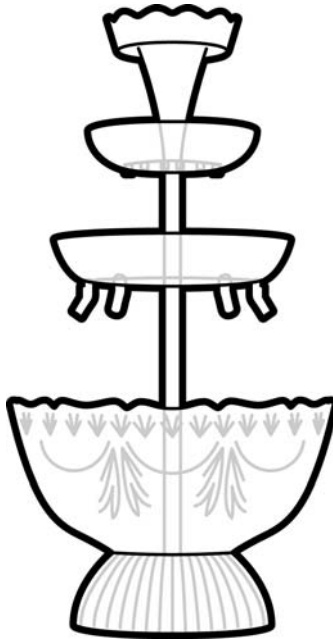


LIGHTED PARTY FOUNTAIN™

Model # LPF-210



FOR HOUSEHOLD USE ONLY

Read These Instructions Before Using This Unit!

Safe These Instructions!

IMPORTANT PRECAUTIONS:

Appliance Specifications:

40 Watts
120 Volts

Important Precautions to Remember:

- A. NEVER immerse motor base in water.
- B. NEVER use near water.
- C. NEVER use an abrasive sponge or cloth on unit.
- D. NEVER use a scouring pad on the unit.
- E. NEVER leave unit unattended while in use.
- F. NEVER place anything other than the intended ingredients in the base bowl.
- G. Unplug unit from outlet when not in use and when cleaning.
- H. DO NOT operate this appliance with a damaged cord or plug or in the event the appliance ever malfunctions.
- I. DO NOT place motor base in dishwasher.
- J. Keep out of reach of children.
- K. The appliance is NOT A TOY.
- L. The appliance is not intended for use by young children or infirmed persons without supervision.
- M. Young children should be supervised to ensure that they do not play with the appliance.

IMPORTANT SAFEGUARDS

When using electrical appliances, basic safety precautions should always be followed, including the following:

1. Read all instructions before operating this appliance.
2. Any appliance with a damaged cord or plug or damaged in any manner should not be operated. The appliance should be returned or taken to the nearest repair shop for examination or repair or send back to company as stated in this booklet in the warranty.
3. The appliance manufacturer does not recommend the use of accessory attachments other than what is supplied with the unit. This may cause injuries.
4. When any appliance is used by or near children, adult supervision is strongly recommended.
5. Not recommended for outdoor use.
6. Keep appliance and cord away from any hot surfaces.
7. To prevent electrical shock, DO NOT immerse cord, plug or any part of the motor base in water or other liquids.
8. This appliance should not be used for purposes other than stated in the instructions accompanying this appliance.
9. DO NOT leave unit unattended while in use or when plugged in to an outlet.

IMPORTANT SAFEGUARDS (Continued)

10. DO NOT ATTEMPT TO OPEN BASE, THERE ARE NO SERVICEABLE PARTS. The light and cord to this product cannot be replaced.
11. The plug has one blade that is wider than the other, to reduce the risk of electrical shock; this plug is intended to fit into a polarized outlet only one way.
12. DO NOT refill or add more liquid while motor is running. Turn unit OFF first. It is preferable to be unplugged while assembling pieces.
13. Unplug from outlet when not in use and before removing parts for cleaning.
14. To reduce the risk resulting from becoming entangled or tripping over a long cord a short power supply cord is provided.
15. **UNIT MUST BE LEVEL, BALANCED AND SECURELY ASSEMBLED TO OPERATE PROPERLY.**
16. The marked electrical rating of an extension cord should be at least as great as the electrical rating of the appliance. Electrical extension cords can be used if care is exercised in their use
17. Keep hands and foreign objects out of the fountain while operating. Check regularly for large chunks of pulp, etc., as this will clog the fountain. Liquid will not flow properly.
18. Use caution when moving the appliance when it has liquid in the bowl.

SAVE THESE INSTRUCTIONS!

INTRODUCTION

Thank you for purchasing The LIGHTED PARTY FOUNTAIN™. This Party Fountain has a beautiful effect of flowing liquid that will add thirst-quenching fun to any occasion.

Your friends and family will enjoy the fun the LIGHTED PARTY FOUNTAIN™ can provide. Please take care of your machine by following these simple instructions and precautions.

You can use a variety of beverages with your LIGHTED PARTY FOUNTAIN™ to provide the flavor you desire. *Depending on what you choose, you can use;*

- Various Juice Drinks
- Premixed Beverages
- Champagne Punch
- *Most any Beverage of Choice (See page 4 for Best Results Tips)*

NOTE: Though you can use the beverage of your choice, consider fruit drinks that may contain pulp. Depending on the consistency of the pulp, this could block the flow from the spouts.

Hold your cups under the nozzles and collect the beverage as it trickles out, creating a dramatic effect for any event!

Your fountain can be used as a beautiful centerpiece, beverage fountain or even as a water feature if you choose.

The base lights up and illuminates whatever beverage or liquid you choose for your event – which enhances the experience.

INTRODUCTION (Continued)

The LIGHTED PARTY FOUNTAIN creates a beautiful effect for an exciting presentation to any occasion, such as;

- **Weddings**
- **Birthdays**
- **Graduation Parties**
- **Business Gatherings**
- **Holidays**
- **Casual get togethers with friends and family**
- **Special Dinners**

Anytime!...

INSTRUCTIONS FOR USE

The LIGHTED PARTY FOUNTAIN™ is easy to use, just follow these simple instructions.

1. Your LIGHTED PARTY FOUNTAIN requires little assembly. *Before first use, rinse parts to remove any packaging debris.
2. Wipe out **base bowl** with a damp cloth and dry. Wash **Tiers** and **Tower Poles** in warm soapy water, rinse then dry. The Party Fountain is now ready to use.
3. When rinsing is complete, assemble fountain as pictured on page 5. **Make sure the parts are all fitted together tightly and the fountain feels sturdy.** Make sure the fountain is properly aligned. This is important to insure the fountain is level and will flow in a balanced fashion. **(See page 8 for order of assembly)**
4. Set the fountain on a stable surface nearest an electrical outlet, out of traffic where the cord will not be able to cause accidents or injury due to tripping.
5. Add the beverage of your choice (the fountain can hold 1.25 gallons of liquid) fill to line on bowl (this is the maximum the bowl should be filled). After you have added the liquid, plug unit in, turn on by flipping the toggle switch on the base. (See photo illustration on page 6)
6. The liquid will rise up the tower and then will filter through each tier. At this time, adjust the tiers and directional extensions (see assembly page 8 and page 10 Extension Spouts) to the desired flow.
7. Cups can then be filled by holding them under the spouts as the flow trickles from tiers.
8. As the liquid level decreases, it is advisable to refill the bowl and keep it at the maximum fill level.
9. **NOTE: Turn unit OFF before adding liquid.**

Let the beverage flow and see your guests' delight in serving themselves with the flow. The lighted base adds effect to any occasion and makes it an event!

TROUBLESHOOTING

PROBLEM	POSSIBLE CAUSE/REMEDY
Fountain not flowing	Check the plug make sure it is properly plugged into outlet
Fountain is flowing unevenly	Unit is not LEVEL, level unit so that beverage is evenly distributed in the tier bowls to ensure level liquid in tiers.
Excessive Splashing	Make sure the splashguards are in place in the first and second tiers, and are securely attached to pegs. Make sure that the Extension Spouts are facing the wall of the bowl, facing out.
Flow is intermittent, interrupted, not flowing properly	Check for pulp or foreign objects blocking the spouts. Check the fountain for balance
TURN MOTOR OFF TO ADD LIQUID - TO RETAIN THE MAXIMUM LEVEL IN THE BOWL	

IMPORTANT TIPS FOR BEST RESULTS USING JUICES AND CARBONATED DRINKS

- DO NOT use juices with pulp such as orange, lemon, lime and grapefruit.
- Use juices with NO PULP because pulp may clog the unit.
- DO NOT use 100% carbonated drinks, such as champagne, sparkling wine or soda – too much carbonated as will not work.
- To use carbonated beverages – first make sure you mix no more than 2 non carbonated drinks to 1 carbonated drink (2 to 1) maximum.
- ALWAYS fill bow with non carbonated drinks first and turn unit on.
- After the unit is filled with punch and is running, then slowly add the carbonated beverage.
- For a CHAMAPGNE OR SODA PUNCH – Mix 4 parts fruit punch to 2 parts Champagne or soda.
- *The clearer the liquid, the better the lights show.*

AFTER THE PARTY – CLEAN UP

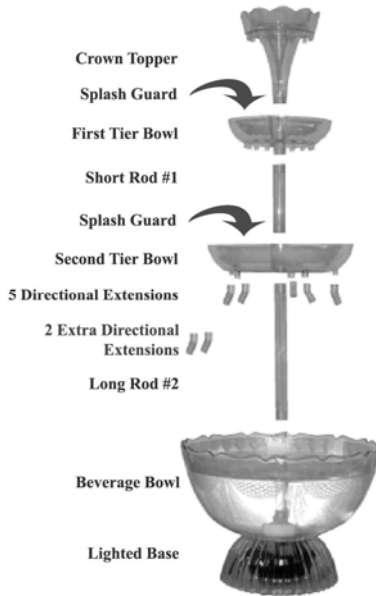
Once the party is over, clean up is easy!

- A. Unplug the unit from the electrical outlet.
- B. Pour out any leftover beverage from the bowl.
- C. Disassemble the fountain parts and wash the parts in warm, soapy water, rinse, and dry. Hand wash only. NOT RECOMMENDED FOR DISHWASHER.
- D. Easily store your fountain for the next event!

By following these simple instructions, your LIGHTED PARTY FOUNTAIN will be fun for friends, family, and kids of all ages...by creating a beautiful effect of your favorite beverages and making anytime an event.

NOTE: To prolong the life of your LIGHTED PARTY FOUNTAIN be sure to follow the cleaning instructions after every use and make sure the tower is flushed while washing the unit to prevent build up. Never use anything abrasive on the base to maintain the original finish and prevent scratches.

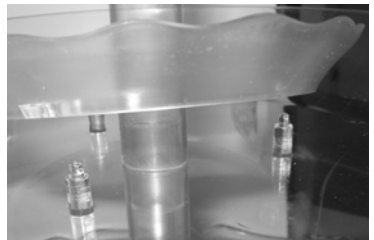
ORDER OF ASSEMBLY



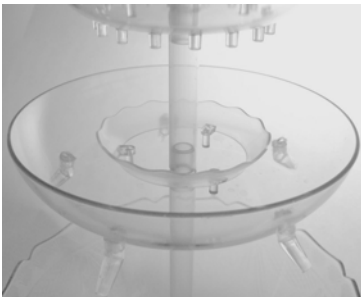
***There are 2 extra directional Extensions in case any are lost.

Note: There are 2 splashguards. The splashguards are fitted into the first tier bowl and the second tier bowl. They are secured in place by the pegs in the tier bowl. (See page 6)

Pegs in tier bowl lock splashguards into place securely.

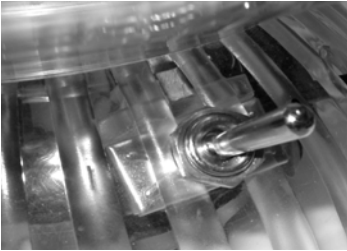
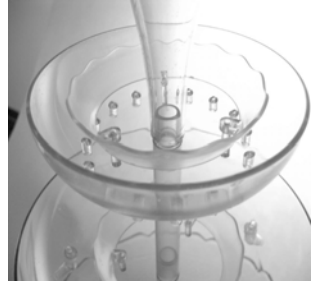
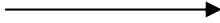


Lower Tier Bowl Splash Guard Inserted

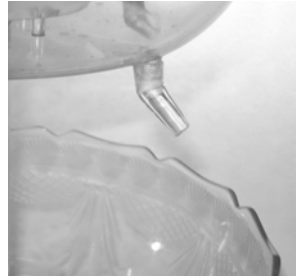
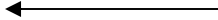


ORDER OF ASSEMBLY (Continued)

Upper Tier Bowl guard inserted



On/Off Power Toggle Switch



Extension Spouts



When attaching these to the lower tier bowl, turn them in the direction facing the wall of the bowl to cut down on possible splashing.

NOTE: Due to possible splashing, and depending on the beverage, place fountain on water proof surface or table covering. Use care in type of table cloth used for possible staining.

NOTE: It is recommended to test your fountain prior to the actual event to ensure the proper use and avoidance of any problem that may arise.

RETURNS & WARRANTY

Should your unit not work or is damaged when you first take it out of the box, please return the unit immediately to the place of purchase. Should you have any other questions about the unit, please contact us at the numbers below between the hours of 8:00 am to 5:00 pm, Monday through Friday, Pacific Standard Time.

Distributed by:

The Helman Group, Ltd.
1621 Beacon Place
Oxnard, Ca 93033
Phone: 805-487-7772
Fax: 805-487-9975
info@helmangroup.com
www.helmangroup.com

LIGHTED PARTY FOUNTAIN™

Model # BCS-997

Limited Warranty

This appliance is designed and built to provide many years of satisfactory performance under normal household use. The distributor pledges to the original owner that should there be any defects in material or workmanship during the first 90 days of purchase, we will repair or replace the unit at our option. Our pledge does not apply to damages caused by shipping, mishandling or unit being dropped. A product deemed defective either from manufacturing or being mishandled is up to the distributor's discretion. To obtain service under this warranty, return this unit to The Helman Group, Ltd. at the address above, shipping prepaid. You must also include a copy of the original receipt along with your name, address and phone number. Include a description of the defect along with the date you purchased the product.

Please read these instructions carefully. Failure to comply with these instructions, damages caused by improper replacement parts, abuse or misuse will void this pledge to you and is being made in place of all other expressed warranties.



The Helman Group, Ltd
1621 Beacon Place
Oxnard, CA 93033

(805) 487-7772 phone
(805) 487-9975 fax

Visit Us Online at
www.helmangroup.com

©2007 The Helman Group, Ltd.