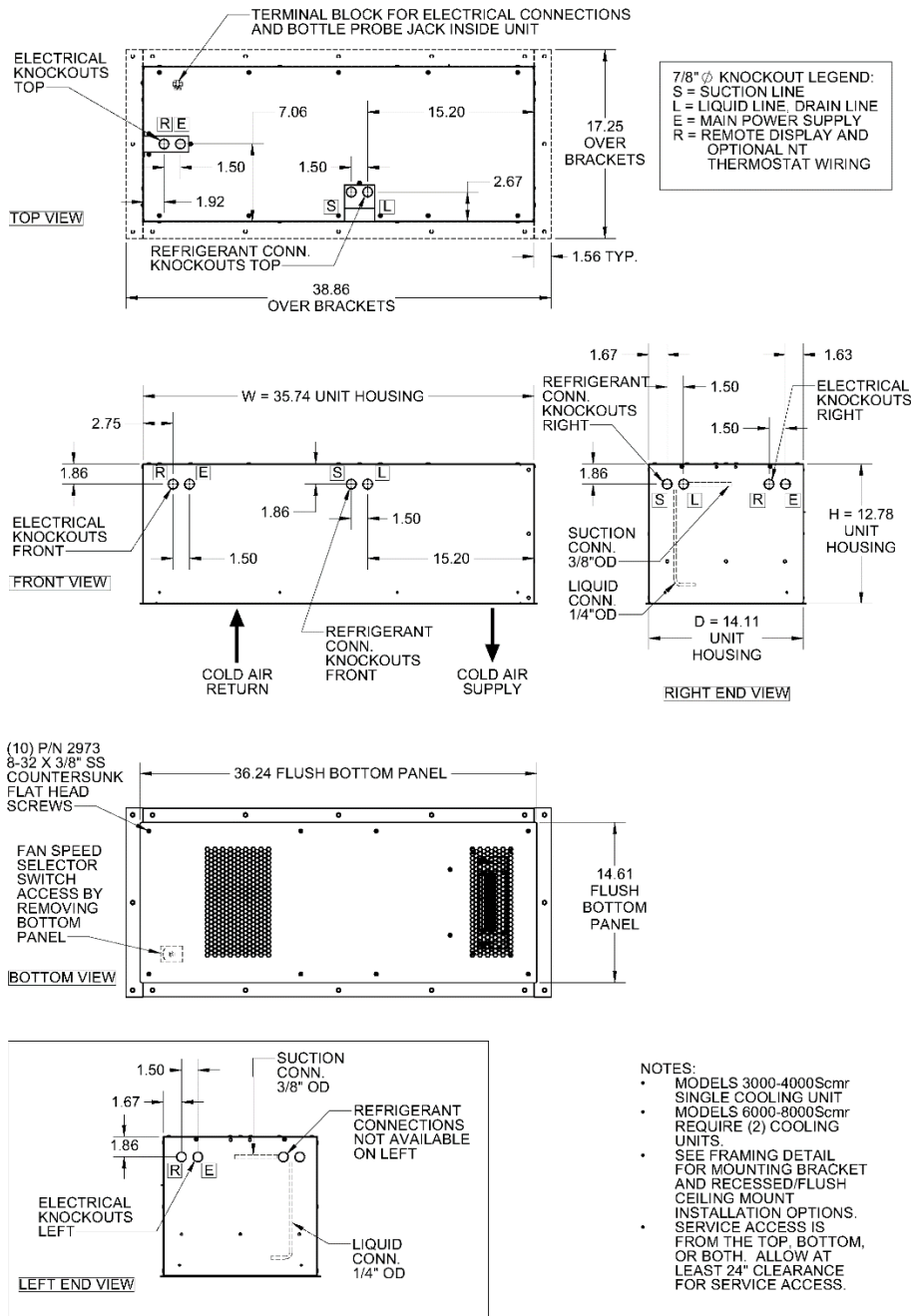


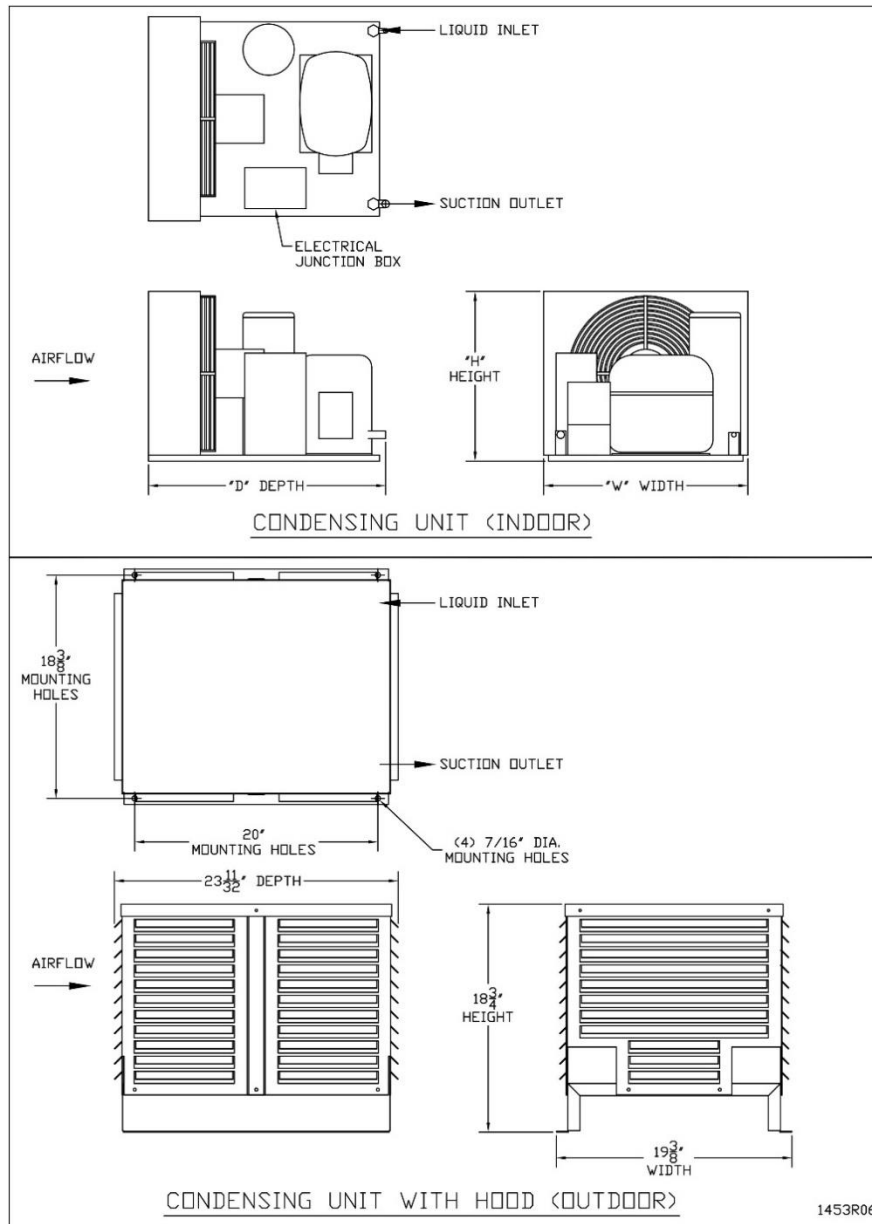
Evaporator Cut Sheet



- NOTES:**
- MODELS 3000-4000Scmr SINGLE COOLING UNIT
 - MODELS 6000-8000Scmr REQUIRE (2) COOLING UNITS.
 - SEE FRAMING DETAIL FOR MOUNTING BRACKET AND RECESSED/FLUSH CEILING MOUNT INSTALLATION OPTIONS.
 - SERVICE ACCESS IS FROM THE TOP, BOTTOM, OR BOTH. ALLOW AT LEAST 24" CLEARANCE FOR SERVICE ACCESS.

Evaporator			
Model	Dimensions W x D x H (inches)	Weight (lbs.)	Running Amps (with fan on "high")
3000Scmr	35.8 x 14.2 x 12.8	60	6.2
4000Scmr	35.8 x 14.2 x 12.8	60	8.5
6000Scmr	(2) @ 35.8 x 14.2 x 12.8	120	13.1
8000Scmr	(2) @ 35.8 x 14.2 x 12.8	120	14.7

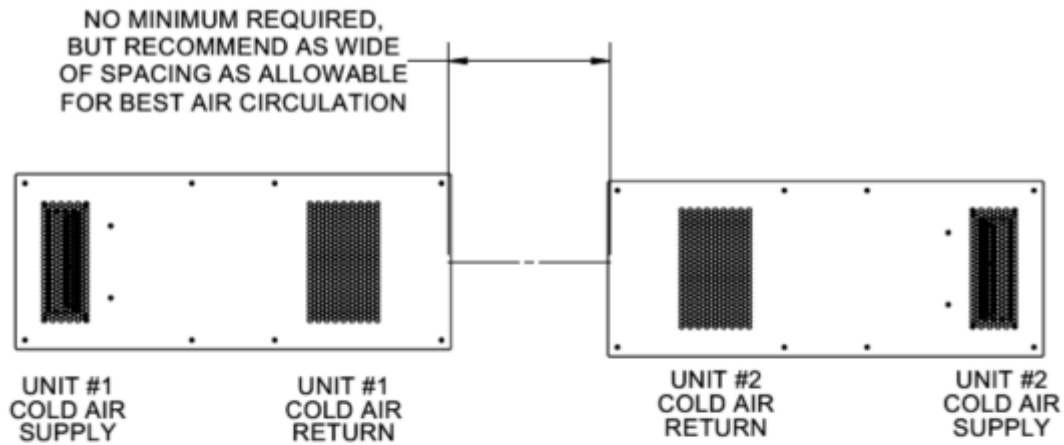
Condensing Unit Cut Sheet



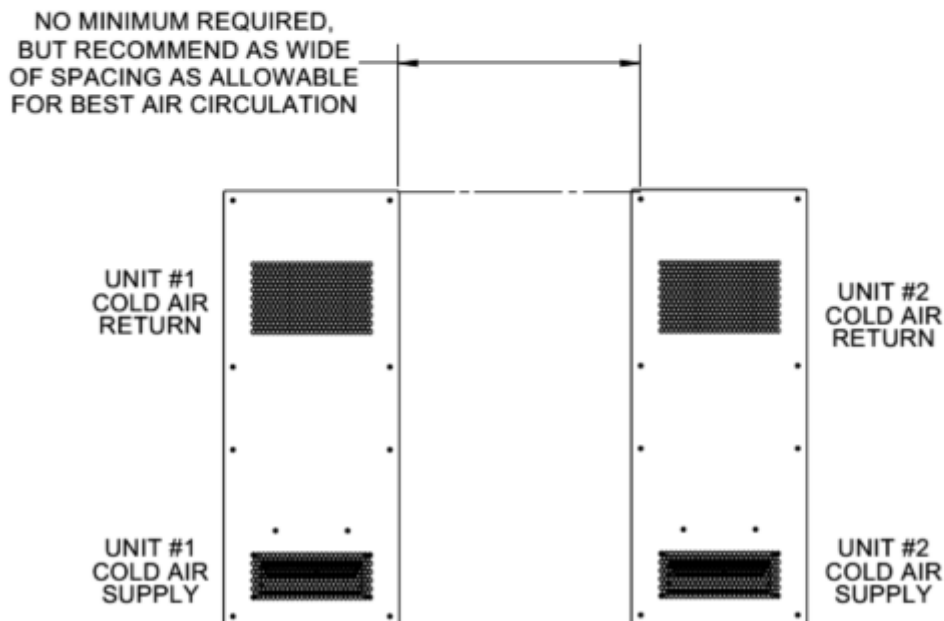
Model	Condensing unit - Indoor		Condensing unit - Outdoor	
	Dimensions W x D x H (inches)	Weight (lbs.)	Dimensions W x D x H (inches)	Weight (lbs.)
3000Scmr	13.5 x 18.9 x 9.1	42	19.4 x 23.3 x 18.8 (with cover)	73
4000Scmr	13.5 x 18.9 x 10.3	45		76
6000Scmr	13.9 x 18.9 x 11.9	54		85
8000Scmr	16.8 x 20.8 x 14	76		107

Dual Evaporator Flush Mounting Options

6000Scmr and 8000Scmr models require two evaporators to be mounted in the cellar. These may be mounted in either of the two orientation options shown in the drawing below.



OPTION 1: END TO END



OPTION 2: SIDE BY SIDE