

Model: HBK1TBF-1

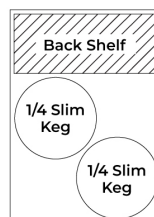
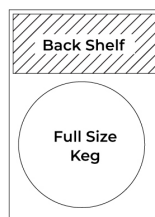
KEGCO 24" WIDE HOMEBREW SINGLE TAP COMMERCIAL BLACK DIGITAL KEGERATOR



FEATURES

- DESIGNED FOR DISPENSING HOMEBREW BEVERAGES
- COMMERCIAL GRADE
- STAINLESS STEEL INTERIOR WALLS AND CEILING
- DIGITAL TEMPERATURE CONTROL PANEL
- COLD AIR CHanneled THROUGH TOWER
- DRIP TRAY WITH OPTIONAL INTERNAL DRAIN
- KNOCKOUT FOR REMOTE CO₂ OR NITROGEN TANK
- NSF COMPLIANT AND ETL SANITATION LISTED

CAPACITY OPTIONS



*With external tank

*With external tank

INCLUDES HOMEBREW KIT

- 5 lb. aluminum CO₂ tank
- 14" tall, 3" diameter polished stainless steel draft tower with faucet
- Double gauge CO₂ regulator
- Set of ball lock homebrew keg couplers
- Hoses and fittings



CO₂ TANK



DRAFT TOWER



BALL LOCK COUPLERS



(800) 710 9939

support@beveragefactory.com
www.beveragefactory.com

OUR SHOWROOM

8520 Miralani Drive
San Diego, CA 92126

Mon-Fri, 7:00am - 4:00pm

Model: **HBK1TBF-1**

KEGCO 24" WIDE HOMEBREW SINGLE TAP COMMERCIAL BLACK DIGITAL KEGERATOR

| DIMENSIONS | |
|--------------------------|-------------|
| Height (without casters) | 35" |
| Height (with casters) | 39" |
| Width | 24" |
| Depth | 31" |
| Shipping Dimensions | 28"x36"x46" |

| WEIGHT | |
|-----------------|----------|
| Unit Weight | 152 lbs. |
| Shipping Weight | 180 lbs. |

| KEG STORAGE CAPACITIES | |
|--------------------------|--------------------|
| Full Size / ½-Barrel | 1 |
| Pony Size / ¼-Barrel | 1 |
| ¼-Barrel Slim | 2 |
| ⅓-Barrel | 4 w/ external tank |
| 5 gal. Ball/Pin Lock Keg | 4 w/ external tank |

| CONTROLS | |
|-----------------------|-----|
| Adjustable Thermostat | Yes |
| Digital | Yes |

| KEY FEATURES | |
|----------------------|-----------------|
| Built-in Capable | No |
| Keg Coupler | Yes |
| Security Lock | Yes |
| Regulator | Yes |
| CO ₂ Tank | Yes |
| Cleaning Kit | Optional Add-On |
| Outdoor Use | No |
| Commercial Use | Yes |

| ELECTRICAL | |
|-------------------------|-----------|
| Electrical Requirements | 115v/60hz |
| Running Amps | 1.7 A |

| CERTIFICATIONS | |
|-----------------------|-----|
| ETL Listed | Yes |
| ETL Sanitation Listed | Yes |

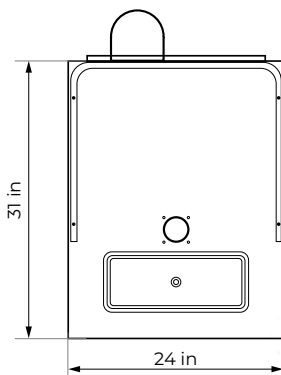
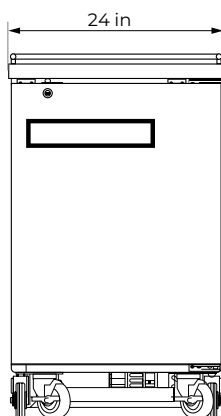
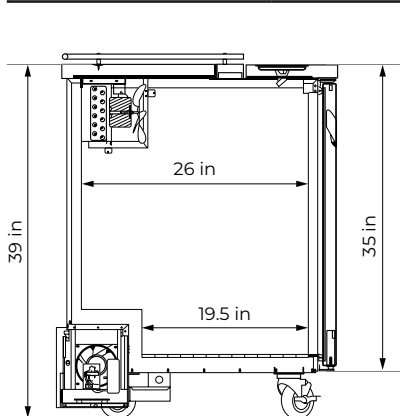
| WARRANTY | |
|-------------------------|---------|
| Labor | 1 Year |
| Parts | 1 Year |
| Compressor (Parts Only) | 5 Years |


| EXTERIOR | |
|------------|-------|
| Cabinet | Black |
| Drip Tray | Yes |
| Guard Rail | Yes |
| Casters | Yes |

| DOOR | |
|------------------------------|----------|
| Color / Material | Black |
| Number of Doors | 1 |
| Door Handle | Recessed |
| Field Reversible | No |
| Accepts Custom Overlay Panel | No |

| DRAFT TOWER | |
|-------------------|-----------------|
| Number of Faucets | 1 |
| Material | Stainless Steel |
| Height | 14" |
| Diameter | 3" |

| COOLING SYSTEM | |
|-------------------|------------|
| Type | Compressor |
| Defrost System | Automatic |
| Front Ventilation | No |



 (800) 710 9939

support@beveragefactory.com
www.beveragefactory.com

OUR SHOWROOM

8520 Miralani Drive
San Diego, CA 92126

Mon-Fri, 7:00am - 4:00pm