

Model: HBK1TBF-2

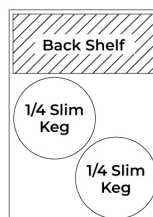
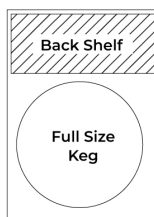
## KEGCO 24" WIDE HOMEBREW DUAL TAP COMMERCIAL BLACK DIGITAL KEGERATOR



### FEATURES

- DESIGNED FOR DISPENSING HOMEBREW BEVERAGES
- COMMERCIAL GRADE
- STAINLESS STEEL INTERIOR WALLS AND CEILING
- DIGITAL TEMPERATURE CONTROL PANEL
- COLD AIR CHanneled THROUGH TOWER
- DRIP TRAY WITH OPTIONAL INTERNAL DRAIN
- KNOCKOUT FOR REMOTE CO<sub>2</sub> OR NITROGEN TANK
- NSF COMPLIANT AND ETL SANITATION LISTED

### CAPACITY OPTIONS



\*With external tank

\*With external tank

### INCLUDES HOMEBREW KIT

- 5 lb. aluminum CO<sub>2</sub> tank
- 14" tall, 3" diameter polished stainless steel draft tower with faucets
- Double gauge CO<sub>2</sub> regulator
- Set of ball lock homebrew keg couplers
- Hoses and fittings



CO<sub>2</sub> TANK



DRAFT TOWER



CO<sub>2</sub> REGULATOR



BALL LOCK COUPLERS



(800) 710 9939

support@beveragefactory.com  
www.beveragefactory.com

#### OUR SHOWROOM

8520 Miralani Drive  
San Diego, CA 92126

Mon-Fri, 7:00am - 4:00pm

Model: **HBK1TBF-2**

## KEGCO 24" WIDE HOMEBREW DUAL TAP COMMERCIAL BLACK DIGITAL KEGERATOR

DIMENSIONS	
Height (without casters)	35"
Height (with casters)	39"
Width	24"
Depth	31"
Shipping Dimensions	28"x36"x46"

WEIGHT	
Unit Weight	152 lbs.
Shipping Weight	180 lbs.

KEG STORAGE CAPACITIES	
Full Size / ½-Barrel	1
Pony Size / ¼-Barrel	1
¼-Barrel Slim	2
⅓-Barrel	4 w/ external tank
5 gal. Ball/Pin Lock Keg	4 w/ external tank

CONTROLS	
Adjustable Thermostat	Yes
Digital	Yes

KEY FEATURES	
Built-in Capable	No
Keg Coupler	Yes
Security Lock	Yes
Regulator	Yes
CO <sub>2</sub> Tank	Yes
Cleaning Kit	Optional Add-On
Outdoor Use	No
Commercial Use	Yes

ELECTRICAL	
Electrical Requirements	115v/60hz
Running Amps	1.7 A

CERTIFICATIONS	
ETL Listed	Yes
ETL Sanitation Listed	Yes

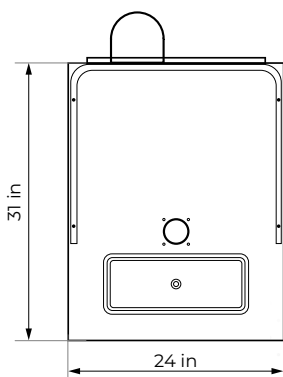
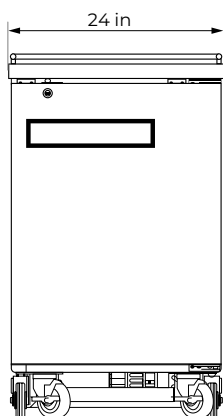
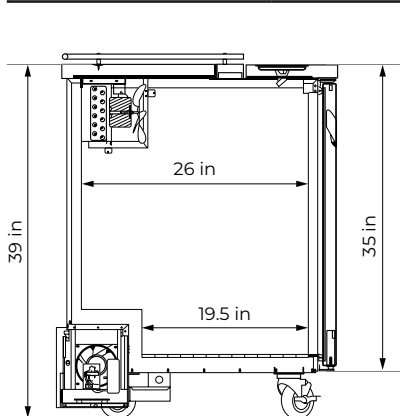
WARRANTY	
Labor	1 Year
Parts	1 Year
Compressor (Parts Only)	5 Years

EXTERIOR	
Cabinet	Black
Drip Tray	Yes
Guard Rail	Yes
Casters	Yes

DOOR	
Color / Material	Black
Number of Doors	1
Door Handle	Recessed
Field Reversible	No
Accepts Custom Overlay Panel	No

DRAFT TOWER	
Number of Faucets	2
Material	Stainless Steel
Height	14"
Diameter	3"

COOLING SYSTEM	
Type	Compressor
Defrost System	Automatic
Front Ventilation	No



 **(800) 710 9939**

support@beveragefactory.com  
www.beveragefactory.com

### OUR SHOWROOM

8520 Miralani Drive  
San Diego, CA 92126

Mon-Fri, 7:00am - 4:00pm