

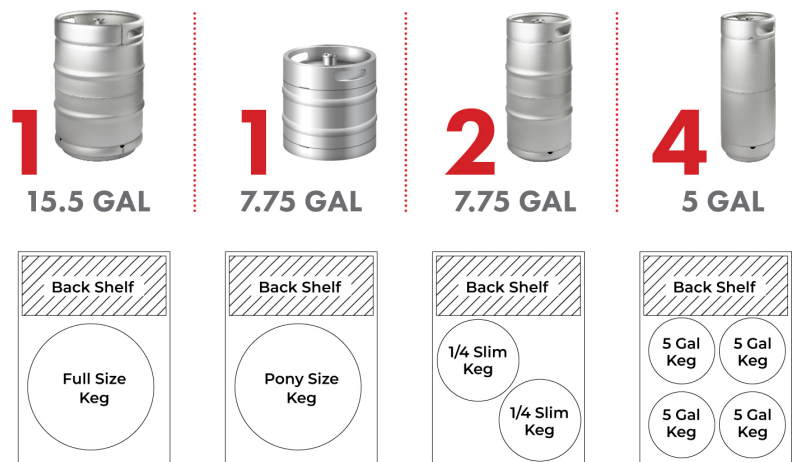
Model: ICTCK-1BF-1

KEGCO 24" WIDE COLD BREW COFFEE SINGLE TAP COMMERCIAL BLACK DIGITAL KEGERATOR

FEATURES

- DESIGNED FOR DISPENSING COLD BREW COFFEE
- COMMERCIAL GRADE
- HEAVY DUTY STAINLESS STEEL TOP
- STAINLESS STEEL INTERIOR WALLS AND CEILING
- DIGITAL TEMPERATURE CONTROL PANEL
- LARGE STAINLESS STEEL INTERIOR
- KNOCKOUT FOR REMOTE CO₂ OR NITROGEN TANK

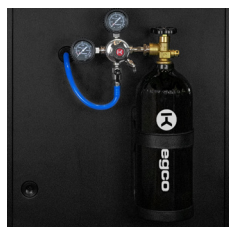
CAPACITY OPTIONS



*With external tank

DESCRIPTION

- Ideal for busy cafes and coffee shops
- Durable steel construction with stainless steel top
- Easily holds a full size keg or multiple smaller kegs
- Drip tray with optional internal drain receptacle to collect spills
- Includes nitrogen tank and regulator for pouring cold brew coffee
- NSF compliant and ETL sanitation listed for commercial use



 (800) 710 9939

support@beveragefactory.com
www.beveragefactory.com

OUR SHOWROOM

8520 Miralani Drive
San Diego, CA 92126

Mon-Fri, 7:00am - 4:00pm

Model: **ICTCK-1BF-1**

KEGCO 24" WIDE COLD BREW COFFEE SINGLE TAP COMMERCIAL BLACK DIGITAL KEGERATOR

DIMENSIONS	
Height (without casters)	35"
Height (with casters)	39"
Width	24"
Depth	31"
Shipping Dimensions	28"x36"x46"

WEIGHT	
Unit Weight	152 lbs.
Shipping Weight	180 lbs.

KEG STORAGE CAPACITIES	
Full Size / ½-Barrel	1
Pony Size / ¼-Barrel	1
¼-Barrel Slim	2
⅓-Barrel	4 w/ external tank
5 gal. Ball/Pin Lock Keg	4 w/ external tank

CONTROLS	
Adjustable Thermostat	Yes
Digital	Yes

KEY FEATURES	
Built-in Capable	No
Ball Lock Keg Coupler	Yes
Security Lock	Yes
Regulator	Yes
Nitrogen Tank	Yes
Cleaning Kit	Optional Add-On
Outdoor Use	No
Commercial Use	Yes

ELECTRICAL	
Electrical Requirements	115v/60hz
Running Amps	1.7 A

CERTIFICATIONS	
ETL Listed	Yes
ETL Sanitation Listed	Yes

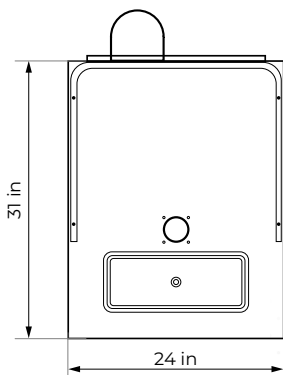
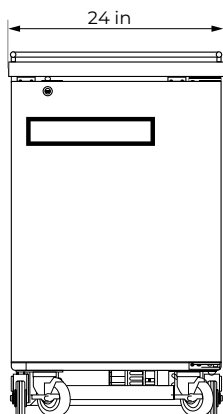
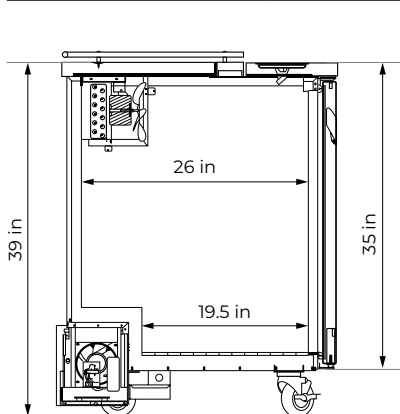
WARRANTY	
Labor	1 Year
Parts	1 Year
Compressor (Parts Only)	5 Years


EXTERIOR	
Cabinet	Black
Drip Tray	Yes
Guard Rail	Yes
Casters	Yes

DOOR	
Color / Material	Black
Number of Doors	1
Door Handle	Recessed
Field Reversible	No
Accepts Custom Overlay Panel	No

DRAFT TOWER	
Number of Faucets	1
Material	Stainless Steel
Height	14"
Diameter	3"

COOLING SYSTEM	
Type	Compressor
Defrost System	Automatic
Front Ventilation	No



 (800) 710 9939

support@beveragefactory.com
www.beveragefactory.com

OUR SHOWROOM

8520 Miralani Drive
San Diego, CA 92126

Mon-Fri, 7:00am - 4:00pm