

# HORIZONTAL BOTTLE COOLERS



## EBC – Series

• EBC37 • EBC50 • EBC65 • EBC80 • EBC95



EBC37



EBC50



EBC65



EBC80



EBC95

### Cabinet Construction

Heavy duty stainless steel countertop, rail and lids, with textured and laminated black vinyl exterior. Galvanized steel interior. 1 3/4" thick high density foamed-in-place polyurethane insulation. Built-in caster thread receptacles for all units.

### Refrigeration System

- Side mounted condensing unit
- Oversized condenser and evaporator coils quickly achieve and maintain desired temperature
- Forced-air cooling with oversized evaporator fan motors providing balanced airflow throughout cabinet to ensure faster temperature drop
- Removable side panel and slide-out condensing unit for convenient repair and maintenance
- Environmentally friendly CFC free R-134A refrigerant
- Air defrost controlled by electrical timer
- Copper tube and aluminum fin evaporator with anti-corrosive coating
- Energy efficient condensate drain pan assembly heated by high side copper tube
- Pre-wired and ready to plug, 115V/60Hz/1Ph, NEMA 5-15P

### Lids, Locks, Openers

- Heavy duty stainless steel, easy glide and removable lids
- 3/4" thick lids, foamed-in-place polyurethane insulation
- Ratchet locks to secure lids (standard)
- Removable bottle cap opener and cap catcher

### Shelving

- Epoxy coated floor wire shelves for cold air circulation
- Adjustable epoxy coated wire bin dividers

### Temperature Control

- Factory preset temperature, 35°F
- Temperature setting range from 32°F to 42°F
- Easy to set analog thermostat

### Options

- 2 1/2" and 4" diameter casters (3 1/2" and 5" overall height)

• Project / Customer \_\_\_\_\_  
 • Item No. \_\_\_\_\_  
 • Model No. \_\_\_\_\_



### Warranty

5 Year — Compressor Warranty  
 3 Year — Parts & Labor Warranty

### Contact



201 W. Artesia Blvd, Compton, CA 90220  
 T. (310) 323-6586, (800) 444-6285  
 F. (310) 323-7524, (310) 761-1127

# HORIZONTAL BOTTLE COOLERS



**EVEREST**  
REFRIGERATION  
www.EVERESTref.com

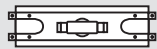
## EBC- Series

• EBC37 • EBC50 • EBC65 • EBC80 • EBC95

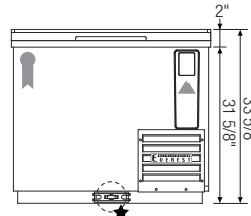
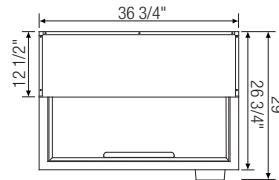
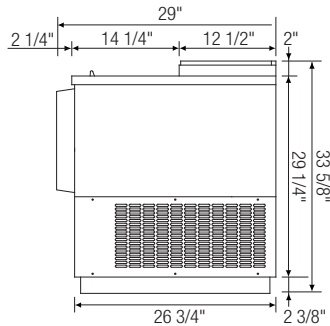
### Dimensions

#### SIDE VIEW

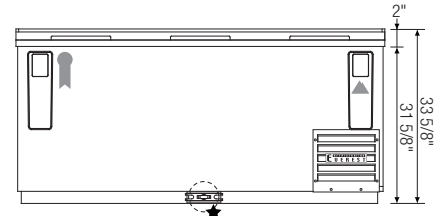
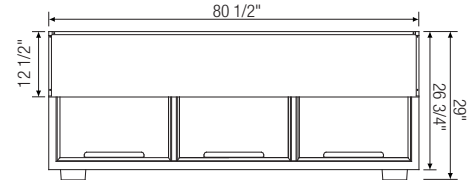
★ 3/4" O.D.



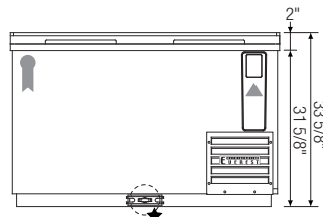
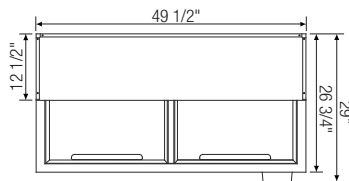
T-Shaped PVC  
Drain Fittings w/  
Movable Plug



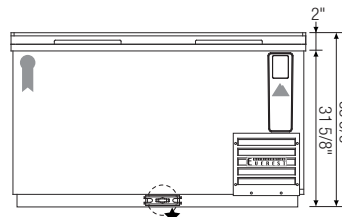
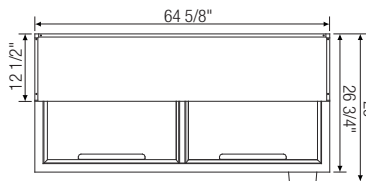
▲ EBC37



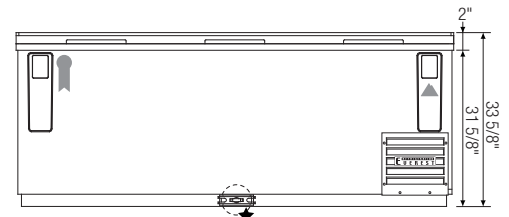
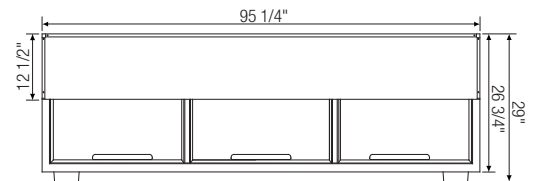
▲ EBC80



▲ EBC50



▲ EBC65



▲ EBC95

Model	Ref/ Frz/ Dual	# of Lids	Capacity (Cu.Ft.)	HP	Refrigerant	# of Bin Dividers	# of Shelves	Capacity		Power (V-Hz-Ph)	Amps	Crated Weight (LBS)	Exterior Dimensions (Inches)			* Depth does not include bottle cap opener with integrated cap receptacle
								12 oz. Cans	12 oz. Bottles				L	D*	H	
EBC37	Ref	1	9.30	1/4+	R-134A	2	1	348	264	115-60-1	4.20	204	36 3/4	26 3/4	33 5/8	Ref = Refrigerator Frz = Freezer Dual = Ref & Frz Combo
EBC50	Ref	2	13.60	1/4+	R-134A	3	2	576	396	115-60-1	4.20	245	49 1/2	26 3/4	33 5/8	
EBC65	Ref	2	18.90	1/4+	R-134A	4	2	780	528	115-60-1	4.20	286	64 5/8	26 3/4	33 5/8	
EBC80	Ref	3	24.40	1/3	R-134A	5	3	1,008	720	115-60-1	5.30	348	80 1/2	26 3/4	33 5/8	
EBC95	Ref	3	29.60	1/3	R-134A	6	3	1,320	900	115-60-1	5.30	428	95 1/8	26 3/4	33 5/8	

**Disclaimer:** Product dimensions are for general purposes and not absolute value. Slight variations may exist. If dimensions are critical, please contact Everest.