



# PERLICK®



## G5 LUXE 24" DUAL ZONE WINE RESERVE

Crafted with over a century of premier commercial refrigeration expertise, the Perlick G5 collection brings the most innovative refrigeration available into the home—empowering hosts to serve effortlessly, whether for one guest or many.

Job:  
Area:  
Item #:  
Model #:



G5WD24GL



G5WD24SL



| MODEL NUMBER | ITEM NUMBER     | DESCRIPTION   |
|--------------|-----------------|---|
| G5WD24SL     | URS24D21-5-SRF0 | 24" DUAL ZONE WINE RESERVE, SOLID DOOR, HINGE RIGHT |
| G5WD24GL     | URS24D41-5-SRF0 | 24" DUAL ZONE WINE RESERVE, GLASS DOOR, HINGE RIGHT |

### G5 Luxe Collection Feature-Benefits

- **High-Performance Cooling:** Perlick's fastest cool-down speed yet, powered by Perlick's exclusive RAPIDcool™ technology chills every beverage quickly and evenly throughout the cabinet
- **Seamless, Beautiful Design:** Sleek cabinet profile and fully concealed, soft-closing hinges integrate effortlessly into surrounding cabinetry
- **Commercial-Grade:** Industry-exclusive 300-series stainless steel interiors and exteriors provide corrosion-resistance and durability
- **Trusted Performance:** Certified for indoor and outdoor use, delivering consistent performance in kitchens, patios, or rooftop terraces
- **Smart Technology:** Adapts to your usage and environment for frost-free, consistent cooling, while continuously monitoring unit health for easy troubleshooting and fast remote support
- **Industry's Best Warranty:** 6 years parts and labor, plus a 30-day initial aesthetics parts and labor warranty
- **Quick-Cool Mode:** Chills beverages up to 20% faster for on-demand cooling
- **Intuitive Touchscreen Controls:** Sleek, modern interface with temperature, lighting, and diagnostics on an easy-to-use interface
- **Total Color Control™ LED Lighting:** 20 curated settings, including four distinct white tones, to create any desired aesthetic
- **Signature Legacy Handle:** Premium knurled stainless grip with cast end caps embossed with the Perlick emblem
- **Ultra-Quiet Performance:** Powered by Perlick-exclusive variable speed technology, delivering quiet operation without compromising cooling power
- **Triple-Pane Glass Doors:** Low-E, argon-filled, UV-resistant glass reduces energy transfer and strengthens durability
- **Perlick Anti-Condensation System™:** Prevents condensation from forming on the exterior of the cabinet
- **Easy Installation:** Patent-pending front-access leveling legs allow quick adjustments without tipping the unit
- **Better For The Environment Refrigerant:** This product uses R600a refrigerant which has zero ODP and very low GWP
- **Exclusively Perlick:** Exclusively designed, engineered and manufactured by Perlick
- **Sabbath Mode-Star K certified** that allows equipment to operate in accordance with Halacha, Shabbat, and Jewish Holidays

### G5 Luxe Dual Zone Wine Reserve Feature-Benefits

- Keep red and white wines at their ideal serving temperatures with separate, independently controlled zones in the same unit
- Vinyl coated steel shelves with stainless steel fronts, shelves are capable of mounting custom wood (or other material) fronts to match custom cabinetry
- Upper Zone – Wine: 40°F (4.4°C) – 68°F (20°C), Factory Set Point 55°F (12.8°C)
- Lower Zone – Wine: 40°F (4.4°C) – 68°F (20°C), Factory Set Point 45°F (7.2°C)



800.558.5592

perlick.com



# PERLICK®



## G5 LUXE 24" DUAL ZONE WINE RESERVE

| MODEL NUMBERS                     |                            | G5WD24SL, G5WD24GL  |
|-----------------------------------|----------------------------|---|
| MODEL DESCRIPTION                 |                            | DUAL ZONE WINE RESERVE  |
| OVERALL DIMENSIONS                | Width – in. (mm)           | 23 7/8" (606)   |
|                                   | Depth – in. (mm)           | 22 1/2" (572)   |
|                                   | Height – in. (mm)          | 34 5/16" (872)  |
| OPENING DIMENSIONS                | Width – in. (mm)           | 24" (610)   |
|                                   | Depth – in. (mm)           | 24" (610)   |
|                                   | Height – in. (mm)          | 34 1/2" (876)   |
| INTERNAL VOLUME Net. Cu. Ft. (L). |                            | 4.7 (133)   |
| SHIPPING WEIGHT Lbs. (kg).        |                            | 236 (107)   |
| EQUIPMENT WEIGHT Lbs. (kg).       |                            | 196 (89)  |
| ELECTRICAL SPECIFICATIONS         | Electrical Supply          | 115VAC/60 Hz/1 Ph   |
|                                   | Running Load Amps          | 1.9   |
|                                   | Electrical Connection      | Cord connected  |
|                                   | Cord Plug Type             | NEMA 3 Prong 5–15P  |
|                                   | Cord Length                | 6'  |
|                                   | Defrost Initiation         | Automatic   |
|                                   | Defrost Type               | Off cycle   |
|                                   | Thermostat                 | Digital   |
|                                   | Lighting Type              | LED   |
| REFRIGERATION SPECIFICATIONS      | Refrigerant                | R600a (45g)   |
|                                   | Expansion Device           | Capillary Tube  |
|                                   | Temperature Settings F (C) | Upper Zone – Wine:<br>40°F (4.4°C) – 68°F (20°C)<br>Factory Set Point 55°F (12.8°C)<br><br>Lower Zone – Wine:<br>40°F (4.4°C) – 68°F (20°C)<br>Factory Set Point 45°F (7.2°C) |
|                                   | Heat Rejection (at 75°F)   | 450 BTU/hr  |
|                                   | Front Vented               | Yes   |

Perlick accessories are available for purchase through an authorized Perlick dealer. For a full list of accessories and to find a dealer near you, visit [perlick.com](http://perlick.com)



800.558.5592

[perlick.com](http://perlick.com)

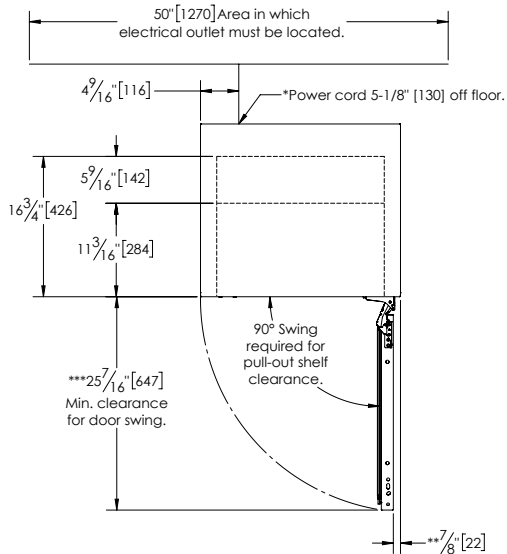


# PERLICK®

**R**  
RESIDENTIAL



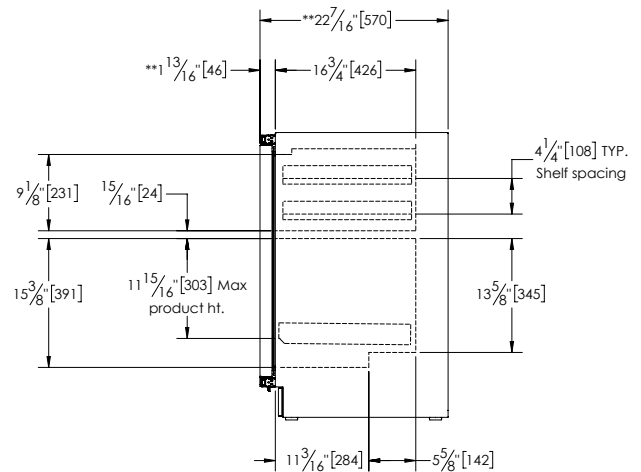
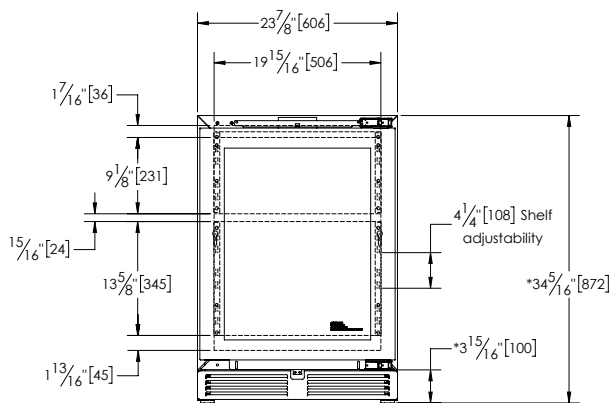
## G5 LUXE 24" DUAL ZONE WINE RESERVE



\*Leg levelers can add 3/4" [19] to these dimensions when fully extended.

\*\*Overlay will add additional 3/4" [19] to overall depth. In addition, overall depth will change depending on handle selected.

\*\*\*Minimum clearance for door swing is shown without door overlay installed



800.558.5592

perlick.com