

Model: **HK-48ADA-BS-L**



KEGCO 24" WIDE STAINLESS STEEL BUILT-IN LEFT HINGE ADA COMPLIANT KEGERATOR

FEATURES

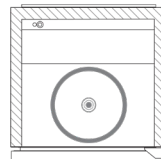
- COMPLIANT WITH ADA REQUIREMENTS
- SPECIALLY DESIGNED WITH A LOW 32.5" HEIGHT
- DIGITAL TEMPERATURE CONTROL
- FAN FORCED COOLING PREVENTS HOT SPOTS
- DURABLE STAINLESS STEEL INTERIOR
- LOCKING STAINLESS STEEL DOOR
- CONVERTS TO A REFRIGERATOR

CAPACITY OPTIONS*



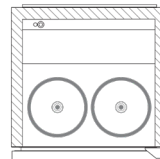
1

7.75 GAL



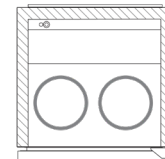
2

5 GAL



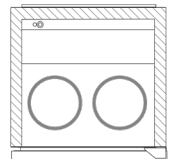
2

3 GAL



2

2.5 GAL



- This undercounter kegerator features a low 32.5" height that makes it compliant with ADA requirements, and can be used built-in or freestanding
- Forced air refrigeration evenly distributes cold air throughout the cabinet so there are not hot spots, and automatic defrost helps ensure easy maintenance
- The wide 32-50 degree Fahrenheit temperature range allows this versatile kegerator to serve beer, wine, kombucha, or coffee at the proper temperature
- The keg cooler can hold one quarter slim keg or two 5 gallon commercial kegs, and can be transformed into a standard all-refrigerator using the three adjustable wire shelves and one glass shelf included

* This unit does not fit a full size keg or 5 gallon ball lock kegs



(800) 710 9939

support@beveragefactory.com
www.beveragefactory.com

OUR SHOWROOM

8520 Miralani Drive
San Diego, CA 92126

Mon-Fri, 7:00am - 4:00pm

Model: **HK-48ADA-BS-L**

KEGCO 24" WIDE STAINLESS STEEL BUILT-IN LEFT HINGE ADA COMPLIANT KEGERATOR

DIMENSIONS	
Height	32.5"
Width	23.5"
Depth	23.5"
Shipping Dimensions	30"x30"x43"

WEIGHT	
Unit Weight	112.45 lbs.
Shipping Weight	116 lbs.

KEG STORAGE CAPACITIES	
1/4-Barrel Slim	Holds 1
1/6-Barrel	Holds 2

CONTROLS	
Adjustable Thermostat	Yes
Digital	Yes

KEY FEATURES	
Built-in Capable	Yes
Keg Coupler	No
Security Lock	Yes
Regulator	No
CO ₂ Tank	No
Outdoor Use	No
Commercial Use	Yes

ELECTRICAL	
Electrical Requirements	115v/60hz
Running Amps	1.3 A

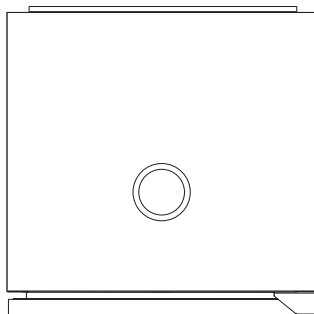
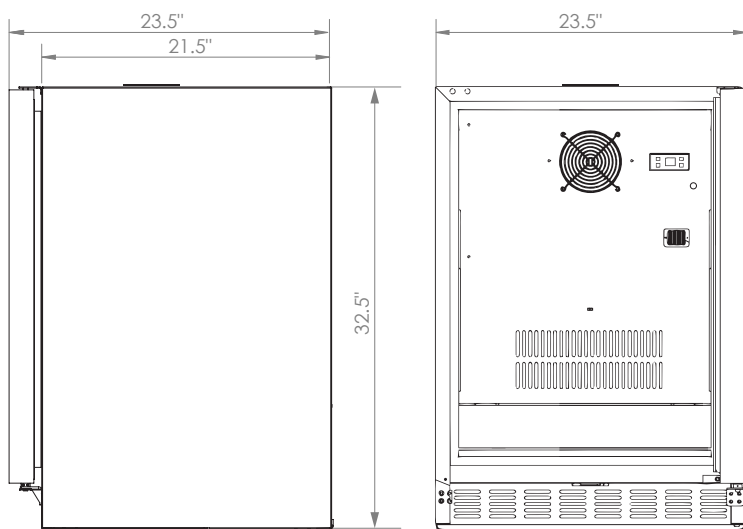
WARRANTY	
Labor	1 Year
Parts	1 Year
Compressor (Parts Only)	5 Years

EXTERIOR	
Cabinet	Black
Drip Tray	No
Guard Rail	No
Casters	No

DOOR	
Color / Material	Stainless Steel
Number of Doors	1
Door Handle	No
Field Reversible	No
Accepts Custom Overlay Panel	No

COOLING SYSTEM	
Type	Compressor
Defrost System	Automatic
Front Ventilation	Yes

CERTIFICATIONS	
ETL Listed	Yes
ETL Sanitation Listed	Yes



 **(800) 710 9939**

support@beveragefactory.com
www.beveragefactory.com

OUR SHOWROOM

8520 Miralani Drive
San Diego, CA 92126

Mon-Fri, 7:00am - 4:00pm