

Model: **HK38SSC-L-2**

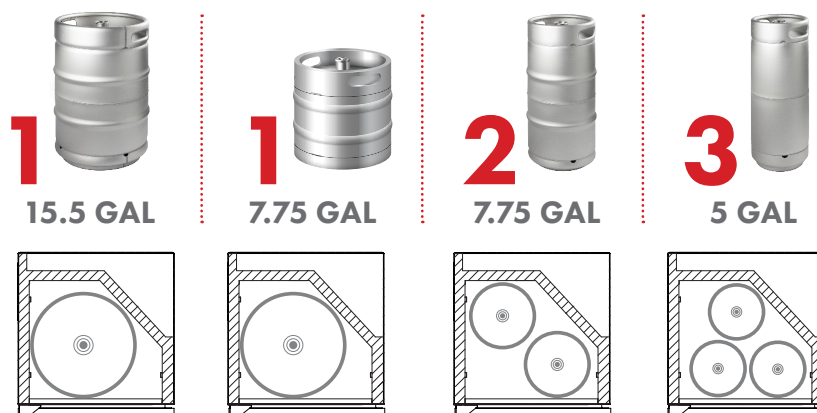


## KEGCO 24" WIDE DUAL TAP STAINLESS STEEL COMMERCIAL BUILT-IN LEFT HINGE KEGERATOR WITH KIT

### FEATURES

- BUILT-IN OR FREESTANDING USE
- POWERFUL COOLING TECHNOLOGY
- DIGITAL TEMPERATURE CONTROL
- AIR COOLED TOWER PREVENTS FOAM
- LARGE STAINLESS STEEL INTERIOR
- LOCKING STAINLESS STEEL DOOR
- CONVERTS TO A REFRIGERATOR

### CAPACITY OPTIONS



### INCLUDES PREMIUM DIRECT DRAW KIT

- 5 lb. aluminum CO<sub>2</sub> tank
- Commercial grade double gauge CO<sub>2</sub> regulator
- Brewery grade D system lever handle keg coupler
- 14.5" tall, 3" diameter polished stainless steel draft tower
- Hoses and fittings



CO<sub>2</sub> TANK



DRAFT TOWER



KEG COUPLERS

PERLICK  
FAUCETS

CO<sub>2</sub> REGULATOR



(800) 710 9939

support@beveragefactory.com  
www.beveragefactory.com

#### OUR SHOWROOM

8520 Miralani Drive  
San Diego, CA 92126

Mon-Fri, 7:00am - 4:00pm



Model: **HK38SSC-L-2**

## KEGCO 24" WIDE DUAL TAP STAINLESS STEEL COMMERCIAL BUILT-IN LEFT HINGE KEGERATOR WITH KIT

| DIMENSIONS             |             |
|------------------------|-------------|
| Height                 | 34-1/8"     |
| Width                  | 24"         |
| Depth (without handle) | 25"         |
| Depth (with handle)    | 26.5"       |
| Shipping Dimensions    | 30"x30"x43" |

| WEIGHT          |          |
|-----------------|----------|
| Unit Weight     | 115 lbs. |
| Shipping Weight | 150 lbs. |

| KEG STORAGE CAPACITIES   |         |
|--------------------------|---------|
| Full Size / 1/2-Barrel   | Holds 1 |
| Pony Size / 1/4-Barrel   | Holds 1 |
| 1/4-Barrel Slim          | Holds 2 |
| 1/6-Barrel               | Holds 3 |
| 5 gal. Ball/Pin Lock Keg | Holds 3 |
| 5-Liter / Mini Keg       | Holds 3 |

| KEY FEATURES         |     |
|----------------------|-----|
| Built-in Capable     | Yes |
| Keg Coupler          | Yes |
| Security Lock        | Yes |
| Regulator            | Yes |
| CO <sub>2</sub> Tank | Yes |
| Outdoor Use          | Yes |
| Commercial Use       | Yes |

| ELECTRICAL              |           |
|-------------------------|-----------|
| Electrical Requirements | 115v/60hz |
| Running Amps            | 1.7 A     |

| CERTIFICATIONS        |     |
|-----------------------|-----|
| ETL Listed            | Yes |
| ETL Sanitation Listed | Yes |

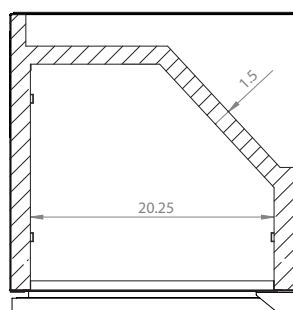
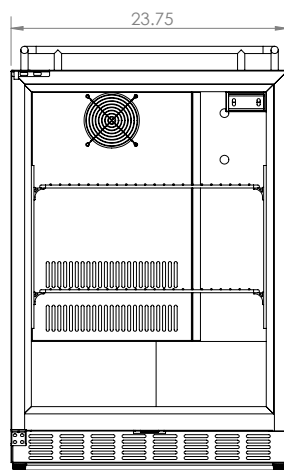
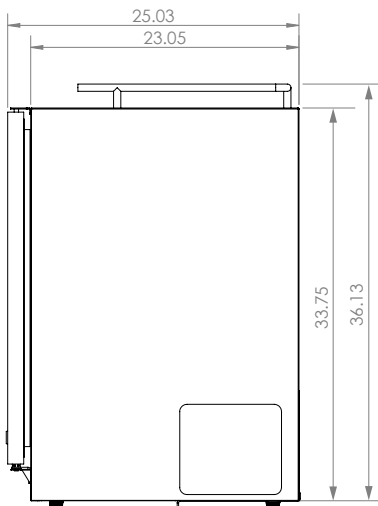
| WARRANTY                |         |
|-------------------------|---------|
| Labor                   | 1 Year  |
| Parts                   | 1 Year  |
| Compressor (Parts Only) | 5 Years |

| EXTERIOR   |                 |
|------------|-----------------|
| Cabinet    | Stainless Steel |
| Drip Tray  | No              |
| Guard Rail | Yes             |
| Casters    | Yes             |

| DOOR                         |                 |
|------------------------------|-----------------|
| Color / Material             | Stainless Steel |
| Number of Doors              | 1               |
| Door Handle                  | Towel/Curved    |
| Field Reversible             | No              |
| Accepts Custom Overlay Panel | No              |

| DRAFT BEER TOWER  |                 |
|-------------------|-----------------|
| Number of Faucets | 2               |
| Material          | Stainless Steel |
| Height            | 14"             |
| Diameter          | 3"              |

| COOLING SYSTEM    |            |
|-------------------|------------|
| Type              | Compressor |
| Defrost System    | Manual     |
| Front Ventilation | Yes        |



(800) 710 9939

support@beveragefactory.com  
www.beveragefactory.com

### OUR SHOWROOM

8520 Miralani Drive  
San Diego, CA 92126

Mon-Fri, 7:00am - 4:00pm