

Model: HBV32ADABSL-3



KEGCO 24" WIDE TRIPLE TAP STAINLESS STEEL BUILT-IN LEFT HINGE ADA HOMEBREW KEGERATOR WITH KIT

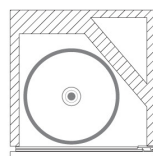
FEATURES

- KEGERATOR COMPLIANT WITH ADA REQUIREMENTS
- CUSTOMIZED TO DISPENSE HOMEBREW BALL LOCK KEGS
- SPECIALLY DESIGNED WITH A LOW 30.79" HEIGHT
- DIGITAL TEMPERATURE CONTROL
- FAN FORCED COOLING PREVENTS HOT SPOTS
- DURABLE STAINLESS STEEL INTERIOR
- LOCKING STAINLESS STEEL DOOR
- BUILT-IN OR FREESTANDING USE

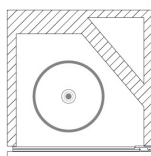
CAPACITY OPTIONS



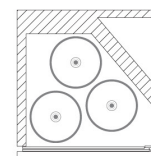
1
15.5 GAL



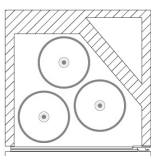
1
7.75 GAL



3
5 GAL



3
5 GAL



INCLUDES KEG TAPPING KIT

- 5 lb. Aluminum CO₂ Tank
- Pro Series Double Gauge CO₂ Regulator
- Three-way Air Distributor
- Low Profile Ball Lock Couplers
- 14" Tall, 3" Diameter Polished Stainless Steel Draft Tower
- Hoses and fittings



CO₂ TANK



DRAFT TOWER



CO₂ REGULATOR




AIR DISTRIBUTOR



BALL LOCK COUPLERS



 (800) 710 9939

support@beveragefactory.com
www.beveragefactory.com

OUR SHOWROOM

8520 Miralani Drive
San Diego, CA 92126

Mon-Fri, 7:00am - 4:00pm

Model: **HBV32ADABSL-3**

KEGCO 24" WIDE DUAL TAP STAINLESS STEEL BUILT-IN LEFT HINGE ADA HOMEBREW KEGERATOR WITH KIT

DIMENSIONS	
Height	30.79"
Width	23.6"
Depth	23.2"
Capacity	6.38 cu. ft.

WEIGHT	
Unit Weight	90 lbs.

KEG STORAGE CAPACITIES	
Full Size / ½-Barrel	1
¼-Barrel Slim	1
⅓-Barrel	3
5 gal. Ball/Pin Lock Keg	3

CONTROLS	
Type	Compressor
Adjustable Thermostat	Yes
Digital	Yes

KEY FEATURES	
Built-in Capable	Yes
Keg Coupler	Ball Lock
Security Lock	Yes
Regulator	Yes
CO ₂ Tank	Yes
Outdoor Use	No
Commercial Use	Yes
Adjustable Shelves	Optional Add-On
Interior Light	Yes

ELECTRICAL	
Electrical Requirements	115v/60hz
Running Amps	1.28 A

CERTIFICATIONS	
ETL Listed	Yes
ETL Sanitation Listed	Yes

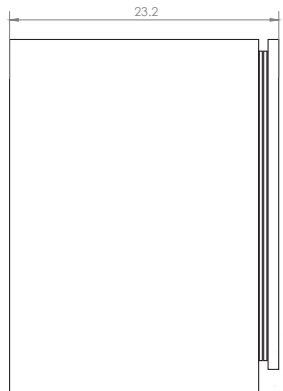
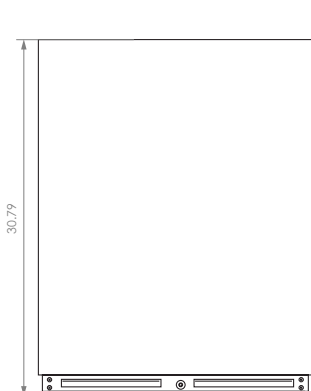
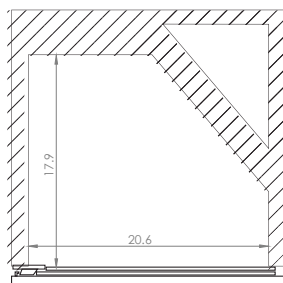
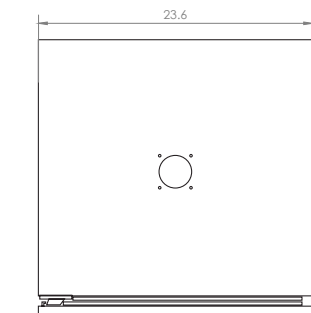
COOLING SYSTEM	
Type	Compressor
Defrost System	Automatic
Front Ventilation	Yes


EXTERIOR	
Cabinet	Black
Drip Tray	No
Guard Rail	No
Casters	No

DOOR	
Number of Doors	1
Door Handle	Yes
Field Reversible	No
Accepts Custom Overlay Panel	No

DRAFT TOWER	
Number of Faucets	3
Material	Stainless Steel
Height	14"
Diameter	3"

WARRANTY	
Labor	1 Year
Parts	1 Year
Compressor (Parts Only)	5 Years



 **(800) 710 9939**

support@beveragefactory.com
www.beveragefactory.com

OUR SHOWROOM

8520 Miralani Drive
San Diego, CA 92126

Mon-Fri, 7:00am - 4:00pm