

Model: ICV32ADABSL-1



KEGCO 24" WIDE SINGLE TAP STAINLESS STEEL BUILT-IN LEFT HINGE ADA NITRO COFFEE KEGERATOR

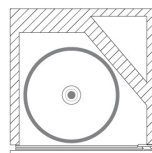
FEATURES

- KEGERATOR COMPLIANT WITH ADA REQUIREMENTS
- CUSTOMIZED TO DISPENSE COLD BREW COFFEE
- SPECIALLY DESIGNED WITH A LOW 30.79" HEIGHT
- DIGITAL TEMPERATURE CONTROL
- FAN FORCED COOLING PREVENTS HOT SPOTS
- DURABLE STAINLESS STEEL INTERIOR
- LOCKING STAINLESS STEEL DOOR
- BUILT-IN OR FREESTANDING USE

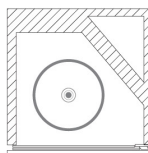
CAPACITY OPTIONS



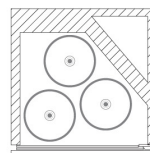
1
15.5 GAL



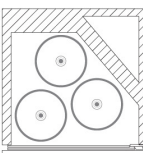
1
7.75 GAL



3
5 GAL



3
5 GAL



INCLUDES KEG TAPPING KIT

- 15 Cu. ft. High Pressure Nitrogen Tank
- Elite Series Double Gauge Nitrogen Regulator
- Low Profile Ball Lock Couplers (D System also available)
- 12" Tall, 3" Diameter Polished Stainless Steel Draft Tower
- Hoses and fittings



NITROGEN TANK



DRAFT TOWER



NITROGEN REGULATOR



BALL LOCK COUPLERS



(800) 710 9939

support@beveragefactory.com
www.beveragefactory.com

OUR SHOWROOM

8520 Miralani Drive
San Diego, CA 92126

Mon-Fri, 7:00am - 4:00pm

Model: ICV32ADABSL-1

KEGCO 24" WIDE SINGLE TAP STAINLESS STEEL BUILT-IN LEFT HINGE ADA NITRO COFFEE KEGERATOR

| DIMENSIONS | |
|------------|--------------|
| Height | 30.79" |
| Width | 23.6" |
| Depth | 23.2" |
| Capacity | 6.38 cu. ft. |

| WEIGHT | |
|-------------|---------|
| Unit Weight | 90 lbs. |

| KEG STORAGE CAPACITIES | |
|--------------------------|---|
| Full Size / ½-Barrel | 1 |
| ¼-Barrel Slim | 1 |
| ⅓-Barrel | 3 |
| 5 gal. Ball/Pin Lock Keg | 3 |

| CONTROLS | |
|-----------------------|------------|
| Type | Compressor |
| Adjustable Thermostat | Yes |
| Digital | Yes |

| KEY FEATURES | |
|--------------------|-----------------|
| Built-in Capable | Yes |
| Keg Coupler | Yes |
| Security Lock | Yes |
| Regulator | Yes |
| Nitrogen Tank | Yes |
| Outdoor Use | No |
| Commercial Use | Yes |
| Adjustable Shelves | Optional Add-On |
| Interior Light | Yes |

| ELECTRICAL | |
|-------------------------|-----------|
| Electrical Requirements | 115v/60hz |
| Running Amps | 1.28 A |

| CERTIFICATIONS | |
|-----------------------|-----|
| ETL Listed | Yes |
| ETL Sanitation Listed | Yes |

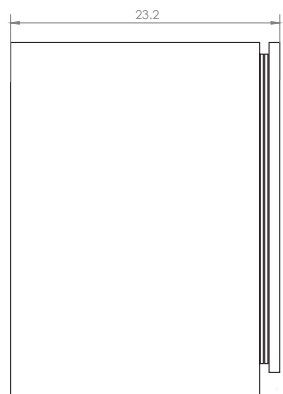
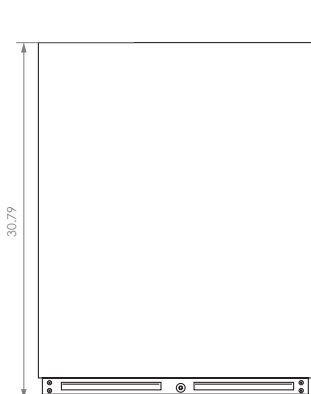
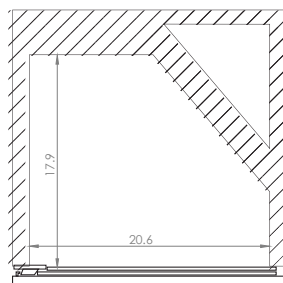
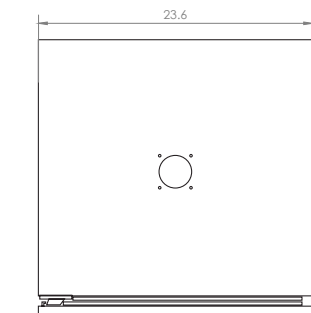
| COOLING SYSTEM | |
|-------------------|------------|
| Type | Compressor |
| Defrost System | Automatic |
| Front Ventilation | Yes |

| EXTERIOR | |
|------------|-------|
| Cabinet | Black |
| Drip Tray | No |
| Guard Rail | No |
| Casters | No |

| DOOR | |
|------------------------------|-----|
| Number of Doors | 1 |
| Door Handle | Yes |
| Field Reversible | No |
| Accepts Custom Overlay Panel | No |

| DRAFT TOWER | |
|-------------------|-----------------|
| Number of Faucets | 1 |
| Material | Stainless Steel |
| Height | 12" |
| Diameter | 3" |

| WARRANTY | |
|-------------------------|---------|
| Labor | 1 Year |
| Parts | 1 Year |
| Compressor (Parts Only) | 5 Years |



 (800) 710 9939

support@beveragefactory.com
www.beveragefactory.com

OUR SHOWROOM

8520 Miralani Drive
San Diego, CA 92126

Mon-Fri, 7:00am - 4:00pm