

Model: V24UPRR-2



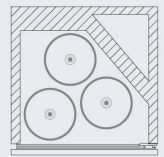
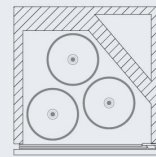
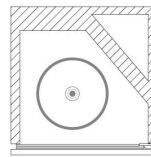
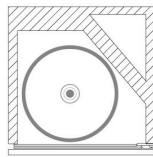
\*PANELS NOT INCLUDED

## KEGCO 24" WIDE DUAL TAP PANEL READY OVERLAY BUILT-IN RIGHT HINGE KEGERATOR

### FEATURES

- BUILT-IN OR FREESTANDING USE
- DIGITAL TEMPERATURE DISPLAY
- STAINLESS STEEL INTERIOR
- FAN FORCED COOLING
- INTEGRATED DOOR LOCK
- FITS VARIABLE KEGS

### CAPACITY OPTIONS



### INCLUDES DIRECT DRAW KIT

- 5 lb. aluminum CO<sub>2</sub> tank
- Commercial grade double gauge CO<sub>2</sub> regulator with air splitter
- 2 brewery grade D system lever handle keg coupler
- 14.5" tall, 3" diameter polished stainless steel draft tower
- Hoses and fittings



CO<sub>2</sub> TANK



DRAFT TOWER



CO<sub>2</sub> REGULATOR

KEG COUPLERS



(800) 710 9939

support@beveragefactory.com  
www.beveragefactory.com

#### OUR SHOWROOM

8510 Miralani Drive  
San Diego, CA 92126

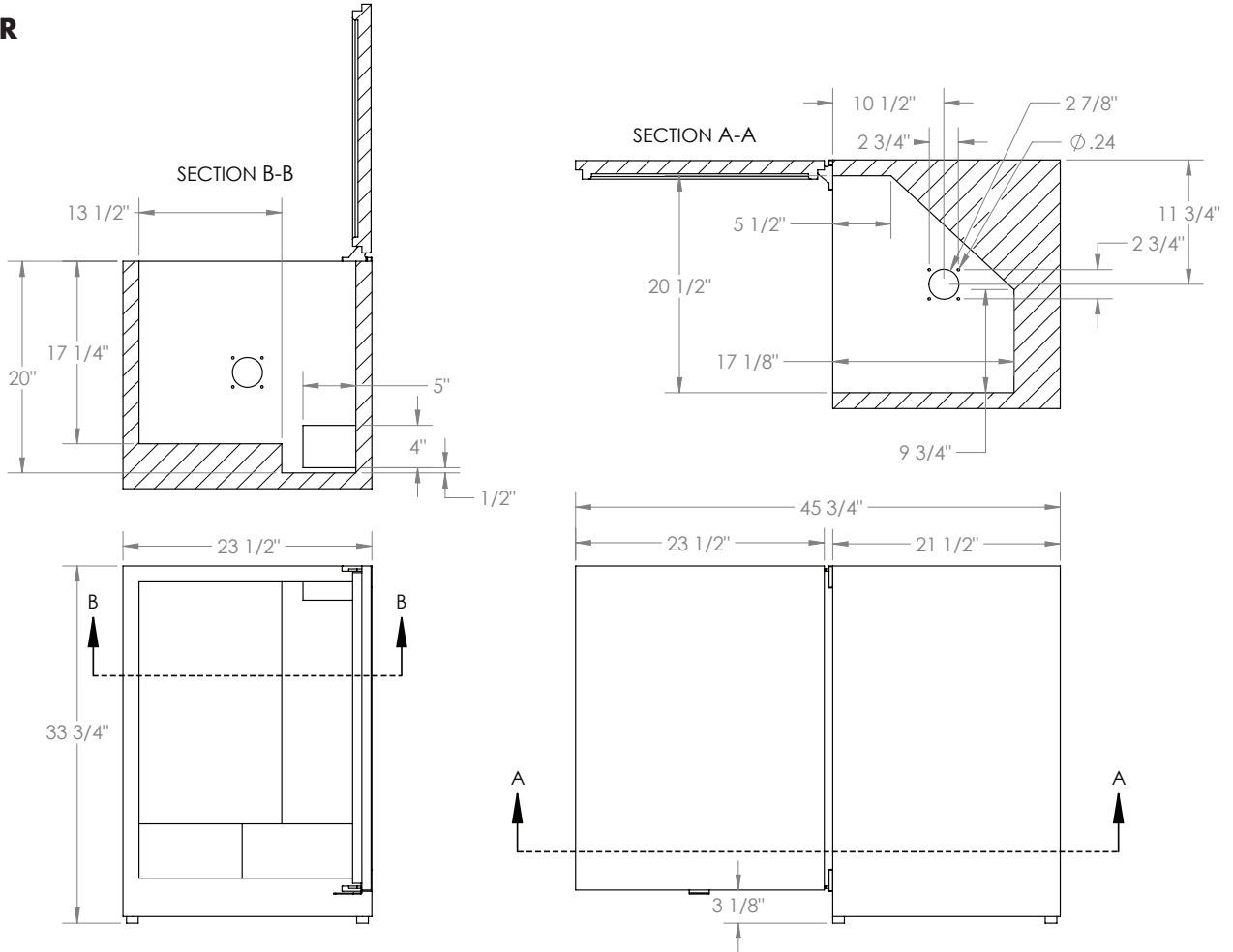
Mon-Fri, 7:00am - 4:00pm

Model: **V24UPRR-2**

**KEGCO 24" WIDE DUAL TAP PANEL READY  
OVERLAY BUILT-IN RIGHT HINGE KEGERATOR**



Cabinet SKU:  
**KC VSK-24U-PRR**



Intertek



Intertek

**DIMENSIONS**

Height	34"
Width	23.5"
Depth	23.25"
Capacity	6.88 cu.ft.

**WEIGHT**

Unit Weight	93.7 lbs.
-------------	-----------

**KEG STORAGE CAPACITIES**

Full Size / 1/2-Barrel	1
Pony Size / 1/4-Barrel	1
1/4-Barrel Slim	1
1/6-Barrel	3
5 gal. Ball/Pin Lock Keg	3

**CONTROLS**

Adjustable Thermostat	Yes
Digital	Yes

**WARRANTY**

Labor	1 Year
Parts	1 Year
Compressor (Parts Only)	5 Years

**KEY FEATURES**

Built-in Capable	Yes
Door Swing	Right Hinge
Keg Coupler	Yes
Security Lock	Yes
Regulator	Yes
CO <sub>2</sub> Tank	Yes
Cleaning Kit	Optional Add-On
Outdoor Use	No
Commercial Use	Yes
Tap Kit	Yes
Number of Taps	2
Adjustable Shelves	Optional Add-On
Shelf Type	Wire
Interior Light	Yes

**ELECTRICAL**

Electrical Requirements	115v/60hz
Running Amps	1.28 A

**CERTIFICATIONS**

ETL Listed	Yes
------------	-----

**EXTERIOR**

Cabinet	Black
Drip Tray	No
Guard Rail	No
Casters	No

**DOOR**

Number of Doors	1
Door Handle	Yes
Field Reversible	No
Accepts Overlay Panel	Yes

**DRAFT BEER TOWER**

Number of Faucets	2
Material	Stainless Steel
Height	14"
Diameter	3"

**COOLING SYSTEM**

Type	Compressor
Defrost System	Automatic
Front Ventilation	Yes
Temperature Range	32-64°F