



Kegco

INSTRUCTION MANUAL

Model: VSK-15

15" Built-In Undercounter Kegerator



BEFORE USE, PLEASE READ AND FOLLOW ALL SAFETY RULES AND OPERATING INSTRUCTIONS.

Kegco has a policy of continuous improvement on its products and reserves the right to change materials and specifications without notice

KEGCO

8520 Miralani Dr., San Diego, CA 92126

Table of Contents

Diagram and Description 3

Safety Tips 4

Installation Instructions 5

Caster Installation 5

Rail Installation 5

Door Handle Installation 6

Undercounter Installation 6

Care and Maintenance 7

Operation Instructions 8

Setting Temperature 9

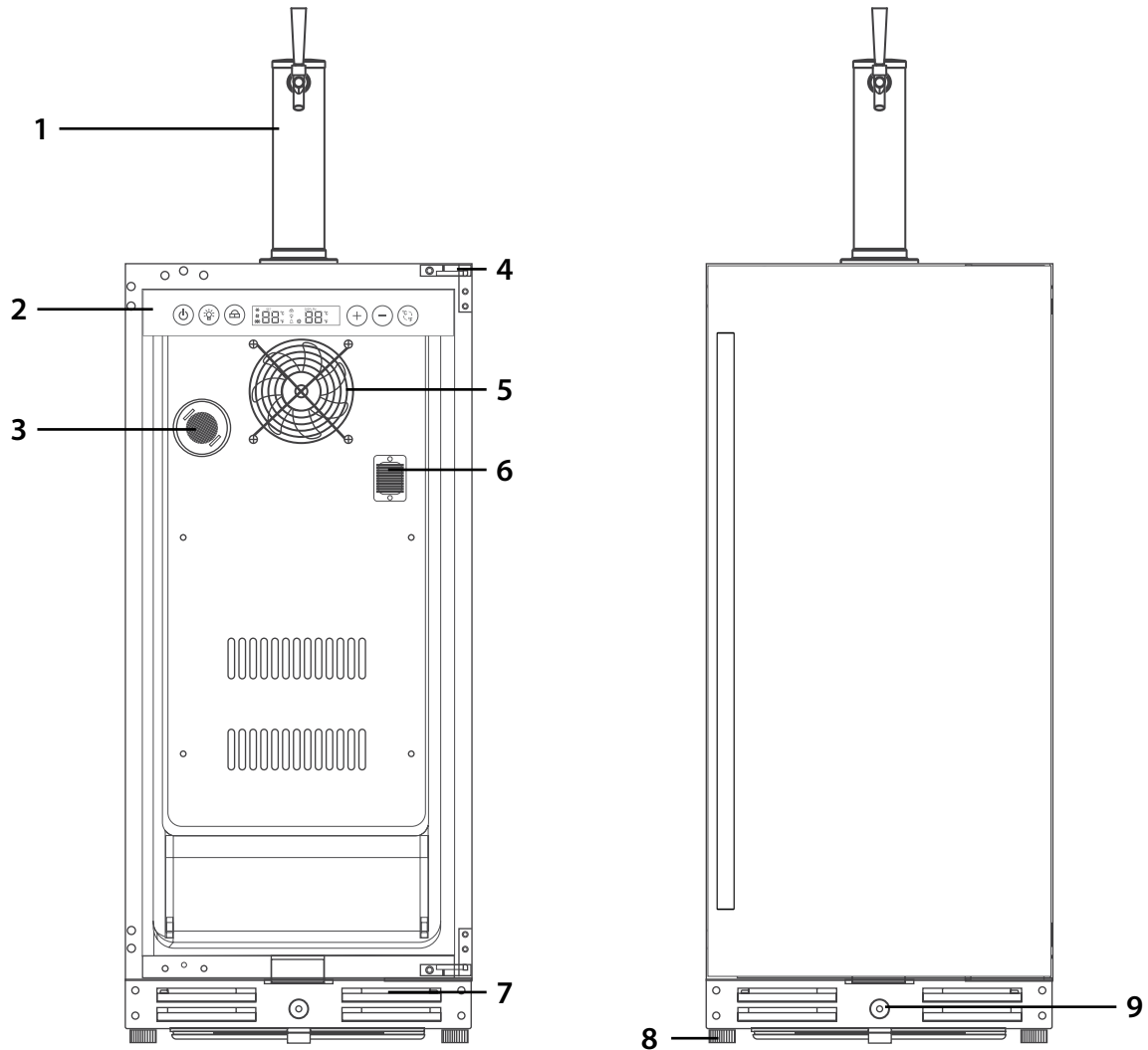
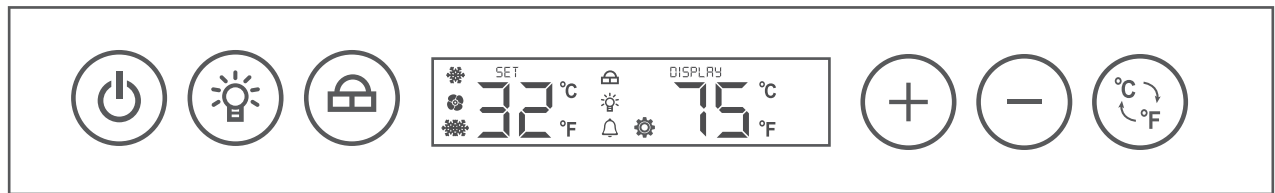
Light Settings 9

Troubleshooting Guide 10

Technical Specifications 11

Warranty Information 12

Diagram and Description



- 1. Draft Tower**
- 2. Control Panel**
- 3. Charcoal Filter**
- 4. Door Hinge**
- 5. Fan**
- 6. Temperature Sensor**
- 7. Front Ventilation Base**
- 8. Adjustable Feet**
- 9. Door Lock**

Safety Tips

Before using this appliance, it must be properly positioned and installed as described in this manual, so please read carefully. To reduce the risk of fire, electrical shock or injury when using this appliance, follow these basic precautions. Failure to heed these safety requirements may result in severe personal injury or death.



DANGER



- Plug into a grounded 3-prong outlet. Do not under any circumstances cut or remove the third ground prong from the power cord supplied, do not use an adapter, and do not use an extension cord.
- It is recommended that a separate circuit, serving only your appliance be used. Do not use outlets that can be turned off by a switch or pull chain.
- Never clean appliance parts with flammable fluids and do not store or use gasoline or other flammable vapors and liquids in the vicinity of this or any other appliance. The fumes can create a fire hazard or explosion.
- Unplug the appliance or disconnect power before cleaning or servicing. Failure to do so can result in electrical shock or death.
- Do not attempt to repair or replace any part of your appliance unless it is specifically recommended in this manual. All other servicing should be referred to a qualified technician.



WARNING



- Use two or more people to move and install appliance. Failure to do so can result in back or other injury.
- To ensure proper ventilation for your appliance, the front of the unit must be completely unobstructed. Choose a well-ventilated area that is protected from the elements, such as wind, rain, water spray or drips.
- The appliance should not be located next to ovens, grills or other high heat sources or in areas of extreme cold.
- The appliance must be installed in accordance with state and local codes. A standard electrical supply (115 V AC only, 60 Hz), properly grounded in accordance with the National Electrical Code and local ordinances is required.
- Do not kink or pinch the power supply cord of appliance.
- The fuse (or circuit breaker) size should be 15 amperes.
- It is important for the appliance to be leveled in order to work properly.
- Never allow children to operate, play with or crawl inside the appliance. Child entrapment and suffocation are not just problems of the past, junked or abandoned appliances are still dangerous. When no longer using your old appliance, take off the door and leave the shelves in place so that children may not climb inside easily.
- Do not use solvent-based cleansers or abrasives on the interior as they may damage or discolor the interior.
- Because of potential safety hazards under certain conditions, it is strongly recommended that you do not use an extension cord with this appliance. However, if you must use an extension cord, it is absolutely necessary that it be a UL/CUL-Listed, 3-wire grounding type appliance extension cord having a grounding type plug and outlet and that the electrical rating of the cord be 115 volts and at least 10 amperes.
- If the appliance is going to be used in an area that is prone to power surges/outages, it is suggested that you use a power surge protector. The surge protector that you select must have a surge block high enough to protect the appliance it is connected to. Damages due to power surges are not considered a manufacturer covered defect and will void your product warranty.
- The cord should be secured behind the appliance and not left exposed or dangling to prevent accidental injury. Never unplug the appliance by pulling the power cord. Always grip the plug firmly and pull straight out from the receptacle. Repair or replace immediately all power cords that have become frayed or otherwise damaged. Do not use a cord with cracks or abrasion damage along its length or at either end. When moving the appliance, be careful not to damage the power cord.
- Do not use this apparatus for other than its intended purpose.
- **California Proposition 65 Warning:** This product can expose you to hexavalent chromium, also known as chromium 6 (Cr6), which is known in the State of California to cause cancer, birth defects or other reproductive harm. For more information, go to: www.P65Warnings.ca.gov

Failure to heed these safety warnings may result in extensive product damage, serious personal injury, or death.

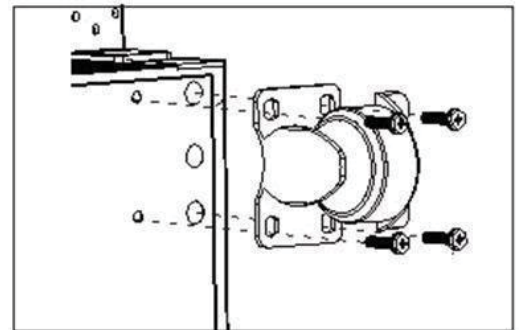
Installation Instructions

BEFORE USE:

- Remove the exterior and interior packaging, but do not remove any foam insulation surrounding the pipes at the back.
- Before connecting the unit to the power source, let it stand upright for approximately 8 hours. This will reduce the possibility of a malfunction in the cooling system from handling during transportation.
- Clean the interior surface with lukewarm water using a soft cloth.
- Place the unit on a flat, solid floor that is strong enough to support it when it is fully loaded. To level the appliance, adjust the rolling casters at the bottom of the unit.
- When moving your unit, please do not incline it more than 45 degrees.
- Locate the appliance away from direct sunlight and sources of heat (stove, heater, radiator, etc.). Direct sunlight may affect the acrylic coating and heat sources may increase electrical consumption.
- The unit should be placed in an area where the ambient temperature is less than 100 degrees Fahrenheit and higher than the lowest temperature you want to store items. If the ambient temperature is lower than the set temperature, the internal temperature will match the ambient temperature.
- Avoid locating the unit in damp areas.
- Unwind the power cord to its full length and inspect for damage before plugging into the outlet.
- Plug the appliance into an exclusive, properly installed and grounded wall outlet. Do not under any circumstances cut or remove the third (ground) prong from the power cord. Any questions concerning power and/or electrical grounding should be directed to a certified electrician or authorized products service center.
- After plugging the appliance into a wall outlet, allow the unit to cool down for 3 to 4 hours before placing items in the appliance.

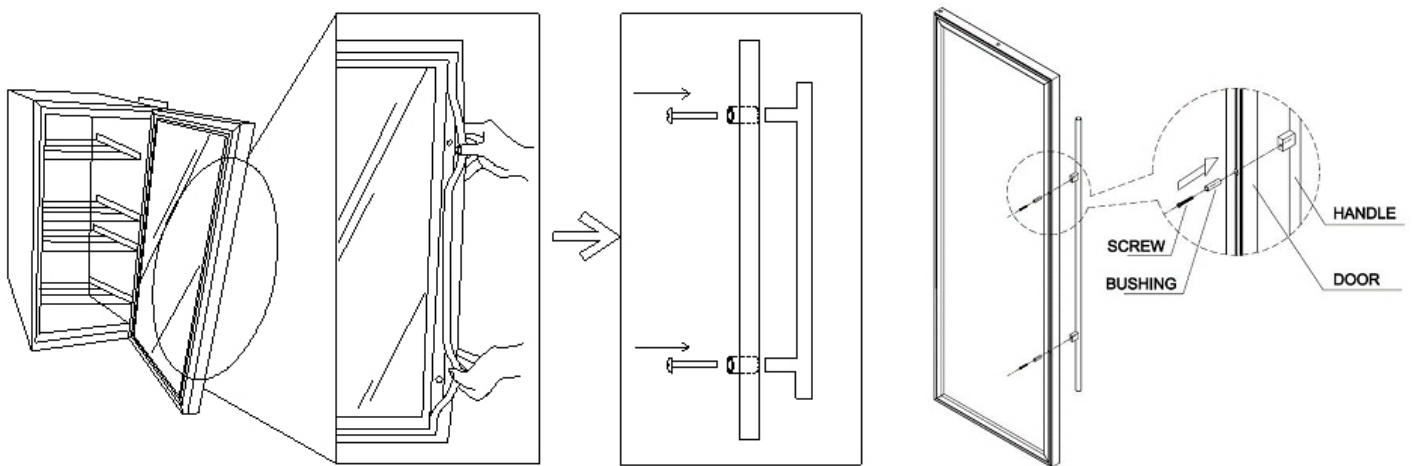
Caster Installation (Select Models)

1. Remove everything from the cabinet and lay the unit on a clean, dry, and padded surface
2. Install caster into the holes on the bottom of the unit as shown and tighten with a wrench
3. The two caster equipped with locks should be installed on the front of the unit
4. Once all four casters are attached, return the cabinet to an upright position
5. Allow the unit to sit for 8-10 hours before plugging in to allow the refrigerant to settle



Handle Installation

1. Remove the box containing the handle and screws from the kegerator.
2. Pull out a bit of the rubber gasket from the back side of the holes.
3. Insert the screws through the holes and connect with the handle.

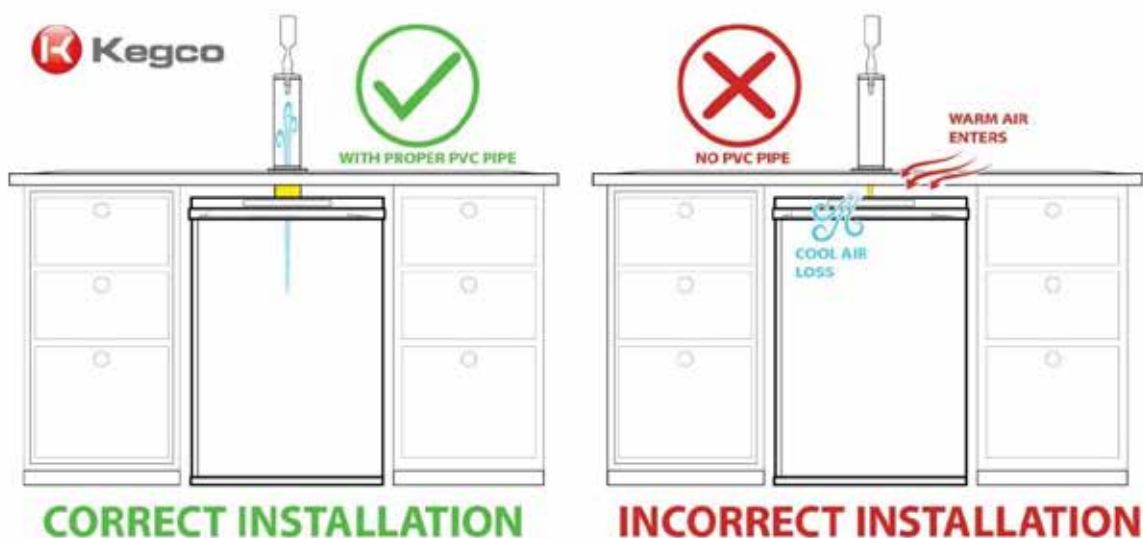


Undercounter Installation

When you are installing a kegerator underneath a countertop make sure to seal the space between the kegerator and the underside of the counter. Most built-in kegerators do not come equipped with any type of solution for insulating the beer line that runs up from the kegerator into the tower mounted on top of the counter. If you leave the beer line exposed, you will be allowing all the cold air to escape from the kegerator, and your draft beer line and tower will not be chilled. This can cause all types of problems like foaming, excessive ice buildup, and an overworked compressor.

You will have to go the hardware store and pick up a few items. This is a very easy and inexpensive project, but it will add a lot of years to your kegerator and keep your energy bills a little lower. To seal the gap, you will need a small length of PVC pipe (6"-10" depending on how large your gap is) and some pipe insulation. This is the type of pipe insulation used around copper pipes in your home, so you will find it close to the copper pipe in the hardware store. Slide a sized piece of pipe insulation inside the PVC pipe to surround the beer line. It is ok to extend the pipe from the interior of the kegerator cabinet up through the countertop and into the base of the faucet tower. A cold air kegerator tower fan can help push cold air up into the tower to prevent foaming caused by temperature changes in the beer line.

You can also use flanges and PVC pipes to create a more permanent insulated channel for the beer line as seen in our DIY kegerator build project and home bar build seen below. The pipe was sealed to the flange with epoxy.



Care and Maintenance

Cleaning your kegerator:

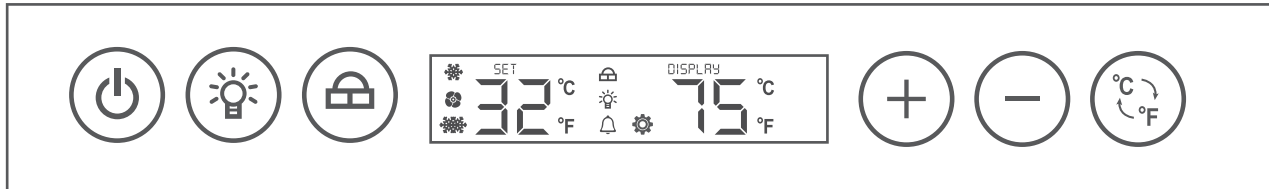
- Turn off the power, unplug the appliance, and remove all items including the dispense kit.
- Wash the inside surfaces with warm water and baking soda solution. The solution should be about 2 tablespoons of baking soda to a quart of water.
- Wring excess water out of the sponge or cloth when cleaning area of the controls, or any electrical parts.
- Wash the outside cabinet with warm water and mild liquid detergent. Rinse and wipe dry with a clean soft cloth.
- Do not use steel wool or a steel brush, caustic soap, abrasive cleaners or bleach on the stainless steel. These will damage the stainless steel or contaminate the stainless steel with steel particles and rusting may occur.
- Dust the front grill and back of the unit twice yearly. Make sure the power is off before cleaning.
- It is recommended to clean the unit completely inside and out yearly to maximize the longevity of the product.

Moving your refrigerator:







- The provided casters (may vary by model) will allow you to roll the appliance from one location to another in your home easily.
- For transportation, remove any items you may have inside the unit.
- Securely tape down all loose items inside your appliance and tape the door shut.
- Be sure the appliance stays secure in the upright position during transportation.
- Protect the outside of the appliance with a blanket or similar item.

Operation Instructions

The kegerator should be placed in an area where the ambient temperature is between 32-100 degrees Fahrenheit. If the ambient temperature is above or below this range, the performance of the unit may be affected. For example, placing your unit in extreme cold or hot conditions may cause the interior temperatures to fluctuate.



Your Kegco kegerator includes an operating panel on the front of the unit. The operating panel includes several features to operate and control the temperature, including:

-  Power – Turns the unit on or off
-  Light – Turns the interior light on or off
-  Lock – Press LOCK for 1.5 seconds to unlock the display panel, if nothing is pressed on the screen for 20 seconds, the LOCK will turn back on
-  + – Increases the temperature in 1 degree increments
-  - – Decreases the temperature in 1 degree increments
-  °C/°F – Toggles the temperature display between Celsius and Fahrenheit

Display Screen:

SET Displays the *desired* temperature on an LED display

DISPLAY Displays the *current* temperature on an LED display



The “snowflake” symbol indicates that it is cooling when it is on, and stops cooling when it is off.



The “fan” symbol, When on, it indicates that the evaporator fan is running, and when off, it indicates that it stops running.



When on, it indicates that the machine is in rapid cooling (120Hz), and when off, it is not rapid cooling



This Symbol Indicates in defrosting



Lock Symbol- show the screen is locked when it is on



Light Symbol-when it is on, it indicates that the led is turned on, and when it is off, led light is turned off



Bell Symbol- When there is an alarm, the it will flash



This Symbol indicates that the unit is in internal settings.

If you are going on vacation, you may leave the kegerator operating during vacations of less than three weeks. If the appliance will not be used for several months, you should remove all items and turn off the appliance. Clean and dry the interior thoroughly. To prevent mold growth, leave the door open slightly, blocking it open if necessary.

Setting Temperature

This Kegco kegerator has a temperature range of 32° to 75° Fahrenheit. You can set the temperature as you desire by touching the + or - button. When you touch the buttons for the first time, the LED readout will show the original temperature set at the manufacturing facility. Each push of the button will adjust the temperature by one degree in the desired direction. Please be aware that the desired temperatures may fluctuate depending on whether the interior light is ON or OFF and depending on the orientation of the bottles.

PLEASE NOTE:

- In the event of a power interruption, all previous temperature settings will be automatically saved and each compartment will return to the previous temperature setting.
- If the unit is unplugged, loses power, or is turned off, you must wait 3 to 5 minutes before restarting. Attempting to restart the unit before this time has elapsed may prevent it from starting.
- When you use the kegerator for the first time or restart the appliance after having been shut off for a long time, there will be a few degrees variance between the temperature you select and the one indicated on the LED readout for the first few hours of operation. After a few hours of operation, the temperature will normalize to the displayed temperature.

Light Settings

The Kegco kegerator has 9 different color options and 5 different brightness levels to choose from.

Color Options: C1=Red, C2=Orange, C3=Yellow, C4=Green, C5=Cyan, C6=Blue, C7=Purple, C8=White, and C9=Rotate All Colors

Light Brightness: b1=20%, b2=40%, b3=60%, b4=80%, and b5=100%

Factory default setting: Color: C9=All color rotation; Brightness: 40%

- Light On/Off: Press the "LIGHT" button for less than 3 seconds and then release to turn the light on or off. The light will turn on or off gradually. The light on/off button controls lights on both zones together.
- Color Selection: Press the "LIGHT" button for more than 3 seconds, until C1 as an example is shown on the display panel to enter the "LIGHT SELECTION" mode. Press the "UP" or "DOWN" buttons to select the color. The display panel will return to normal operation after 10 seconds of no activity.
- Brightness Selection: Press the "LIGHT" button for more than 3 seconds. After C1 is displayed on the panel, press "LIGHT" button again to enter into "BRIGHTNESS SELECTION" mode. b1 will be displayed on the panel.
Press "LIGHT" again to return to "COLOR SELECTION" mode.
During either "COLOR SELECTION" or "BRIGHTNESS SELECTION" mode, press "LIGHT" button for more than 3 seconds to end the modes or leave it for 10 seconds.
- The unit is programmed to remember your previous light settings in case the unit is powered off.

Troubleshooting Guide

| PROBLEM | POSSIBLE CAUSE |
|--|---|
| Kegerator does not operate | Not plugged in or the appliance is turned off The circuit breaker tripped or a fuse has blown out |
| Kegerator is not cold enough | Check the temperature control setting External environment may require a higher setting The door is opened too often The door is not closed completely The door gasket is not sealing properly |
| Kegerator is turning on and off frequently | The room temperature is hotter than normal The door is opened too often The door is not closed completely The temperature control is not set correctly The door gasket is not sealing properly |
| The light does not work | Not plugged in The circuit breaker tripped or a fuse has blown The light bulb has burned out The light button is "OFF" |
| Vibrations | Check to assure that the refrigerator is on a level surface |
| The kegerator seems to make too much noise | A faint humming noise may come from the flow of the refrigerant, which is normal As each cycle ends, you may hear gurgling sounds caused by the flow of refrigerant in your kegerator Contraction and expansion of the inside walls may cause popping and crackling noise The kegerator is not on a level surface |
| The door will not close properly | The unit is not on a level surface. The gasket is dirty. |
| ERROR CODE C1 on screen | The temperature sensor is open circuit |
| ERROR CODE U1 on screen | The temperature sensor is short circuit |
| ERROR CODE HH on screen | High-temperature alarm |
| ERROR CODE LL on screen | Low-temperature alarm |
| ERROR CODE DO on screen | When the door remains open for up to 3 minutes, it alarms and shows DO, at this point, touching any button in the control panel can eliminate the alarm. If the button is not touched, the alarm is automatically eliminated within the 5 minutes. After touching the button to eliminate the alarm, the alarm will start again if continuing to keep the door open for 3 minutes |

Technical Specifications

| | |
|-----------------------|---|
| Storage Capacity | One (1) 7.75 Gallon Quarter Slim Keg or One (1) 5 Gallon Commercial or Homebrew Keg |
| Dimensions | 34" H x 15" W x 23 5/8" D (25 1/2" w/ handle) |
| Weight | 70.55 lbs. (empty) |
| Voltage / Frequency | 115v / 60Hz |
| Running Amps | 0.9A |
| Operating Temperature | 32°F - 75°F |
| Ambient Temperature | 32°F - 100°F |

Warranty Information

WHAT IS COVERED LIMITED ONE-YEAR WARRANTY:

For one year from the date of purchase by the original owner, Kegco will, at its option, repair or replace any part of the unit, which proves to be defective in material or workmanship under normal use. During this period Kegco will provide all parts and labor necessary to correct such defects free of charge, so long as the unit has been installed and operated in accordance with the written instructions in this manual. Kegco will provide you with a reasonably similar replacement product that is either new or factory refurbished. In rental or commercial use, the warranty period is 90 days. All Kegco Appliances of 3.5 cubic feet capacity or less must be brought/sent to the appliance service shop for repair.

LIMITED SECOND THROUGH FIFTH YEAR WARRANTY:

For the second through the fifth year from date of original purchase, Kegco Products will provide a replacement compressor free of charge due to a failure. You are responsible for the service labor and freight charges. In rental or commercial use, the limited compressor warranty is one year and nine months. Cost to move the appliance to the servicers' shop and back to the user's home, as may be required, are the user's responsibility.

WHAT IS NOT COVERED:

- Content losses of food or other, due to spoilage.
- Incidental or consequential damages.
- Parts and labor costs for the following will not be considered as warranty:
 - Door springs, and/or frames.
 - Inner door panels, door rails and/or door supports.
 - Light bulbs and/or plastic housing.
 - Plastic cabinet liners.
 - Punctured evaporator that voids the warranty on the complete sealed system.
 - Repairs performed by unauthorized servicers.
 - Shipping and handling costs associated with the replacement of the unit.
 - Service calls that do not involve defects in material or workmanship such as customer education, door reversal, or proper installation.
 - Surcharges including, but not limited to, any after hour, weekend, or holiday service calls, tolls, ferry trip charges, or mileage expense for service call to remote areas, including the State of Alaska.
 - Service calls that are related to external problems, such as abuse, misuse, inadequate electrical power, accidents, fire, floods, or acts of God.
 - Replacement of house fuses or resetting circuit breakers.
- Failure of the product if it is used for other than its intended purpose.
- This warranty does not apply outside the Continental USA.

SERVICE FOR YOUR REFRIGERATOR:

With the purchase of your Kegco appliance, you can have the confidence that if you ever need additional information or assistance, the Kegco Customer Service team will be here for you. Whatever your questions are about our products, help is available. Just call us toll-free.

KEGCO PRODUCT CUSTOMER SERVICES:

Product Information, Part Orders and In-Home Repair Service: **888-980-4810**