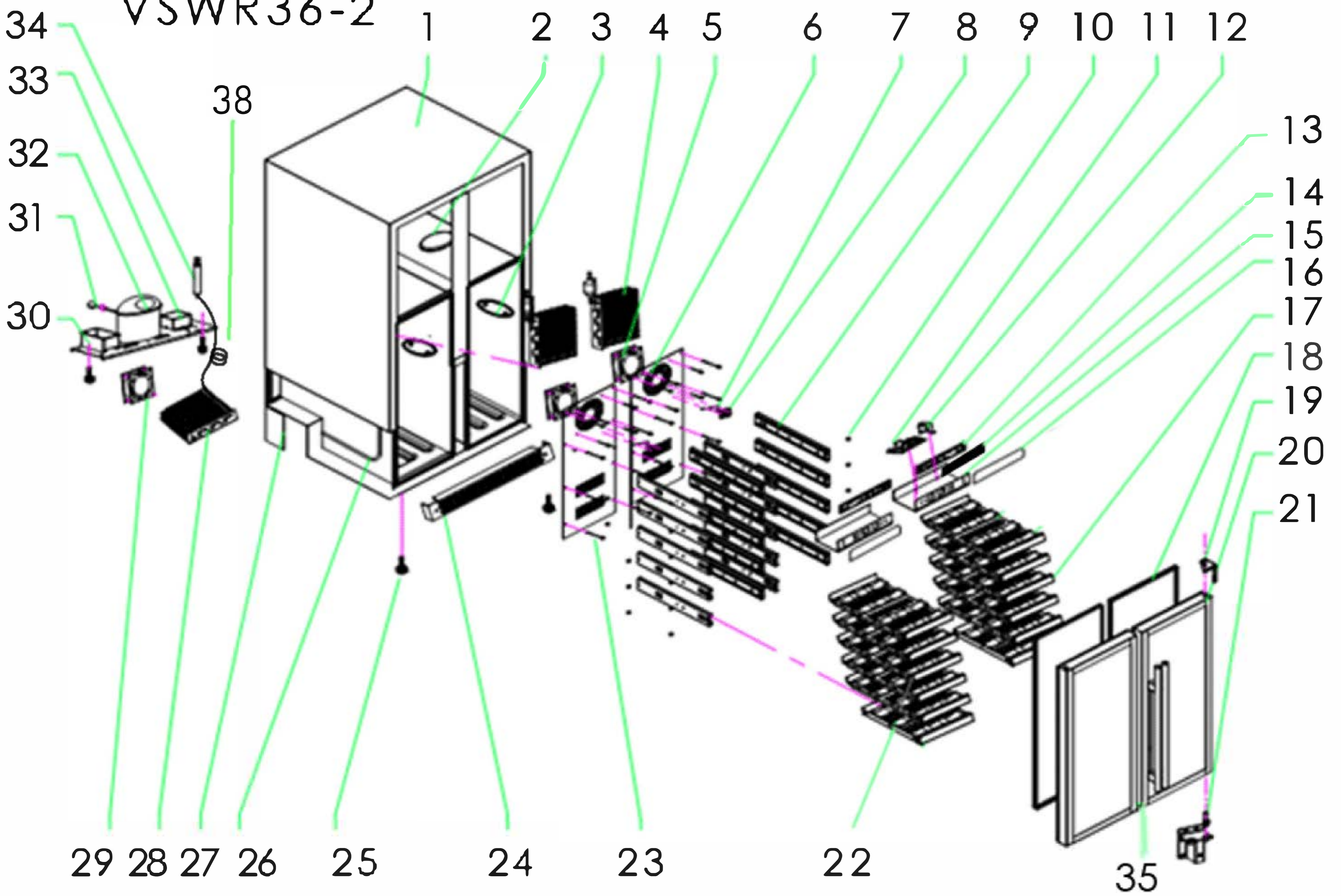


VSWR36-2



- | | | | | | |
|----|-----------------------------|------------|----|----------------------|---------------------------|
| 1 | BODY | | 19 | TOP HINGE | V-THINGE6 |
| 2 | TOP LED SET | V-TOPLED | 20 | DOOR FRAME | |
| 3 | SIDE LED SET | V-SIDELED | 21 | LOWER HINGE | V-BHINGE1 |
| 4 | EVAPORATOR | V-EVAP3 | 22 | SMALL RACK | V-BRACK3 |
| 5 | FAN | V-BIGFAN1 | 23 | SCREW | |
| 6 | INNER CLAPBOARD | | 24 | GRILL | V-GRILL5 |
| 7 | RIGHT ZONE SENSOR | V-SENSOR3 | 25 | ADJUSTABLE FOOT | V-FOOT1 |
| 8 | SENSOR COVER | V-SENCOVR | 26 | DWE REMOVABLE TUBE | |
| 9 | SHELF GUIDE | V-ROLLERSU | 27 | REINFORCE IRON | |
| 10 | SLIDING GASKET | | 28 | CONDENSER | V-COND3 |
| 11 | MAIN BOARD | V-MAIN7 | 29 | FAN | V-BIGFAN2 |
| 12 | TRANSFORMER | V-TRANS2 | 30 | WATER TANK | V-CONPAN |
| 13 | CONTROL PANEL | V-DISP3 | 31 | POWER CALBLE | |
| 14 | PLASTIC BUTTON | V-PBUTTON2 | 32 | COMPRESSOR | V-COMP4 |
| 15 | ELECTRICAL EQUIPMENT BOX | | 33 | WIRE BLOCK | |
| 16 | RIGHT DISPLAY STICKER | V-STICKER6 | 34 | DRY FILTER | V-FILTER |
| | LEFT DISPLAY STICKER | V-STICKER5 | 35 | LOCK | V-LOCK |
| 17 | BIG RACK | V-MRACK3 | 36 | EVAPORATOR SENSOR | V-EVAPSEN2 (NOT SHOWN) |
| 18 | DOOR SEAL | V-DSEAL4 | 37 | LEFT ZONE SENSOR | V-SENSOR2 (NOT SHOWN)T |
| | | | 38 | CAPILLARY TUBE | V-CAPB |